

HENEX Price forecast

Day-ahead price forecast for Greek market



HENEX Forecast for 14.05.2021

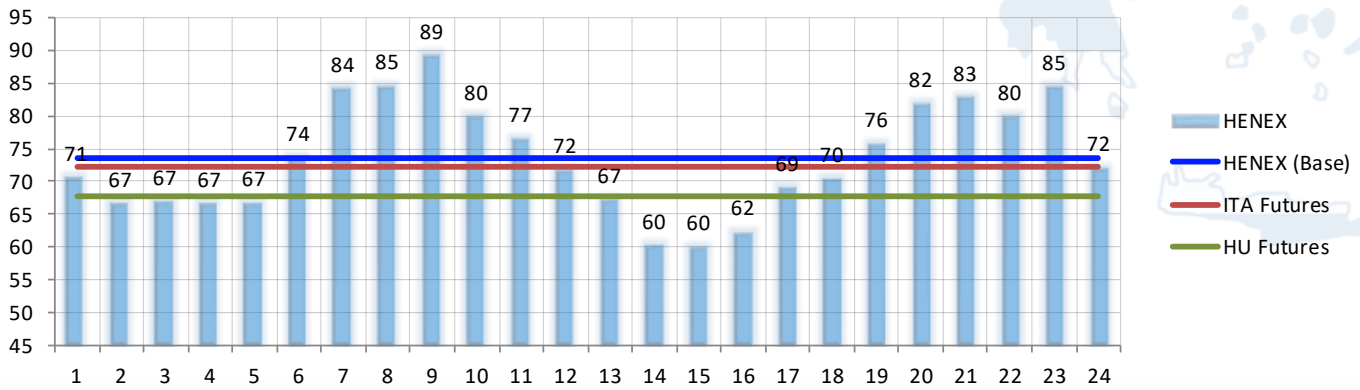
HENEX Base: 73.6 EUR/MWh

HENEX Peak: 72.1 EUR/MWh

ITA Futures BASE: 72.2 EUR/MWh

HU Futures BASE: 67.6 EUR/MWh

14.05.2021 - Forecast



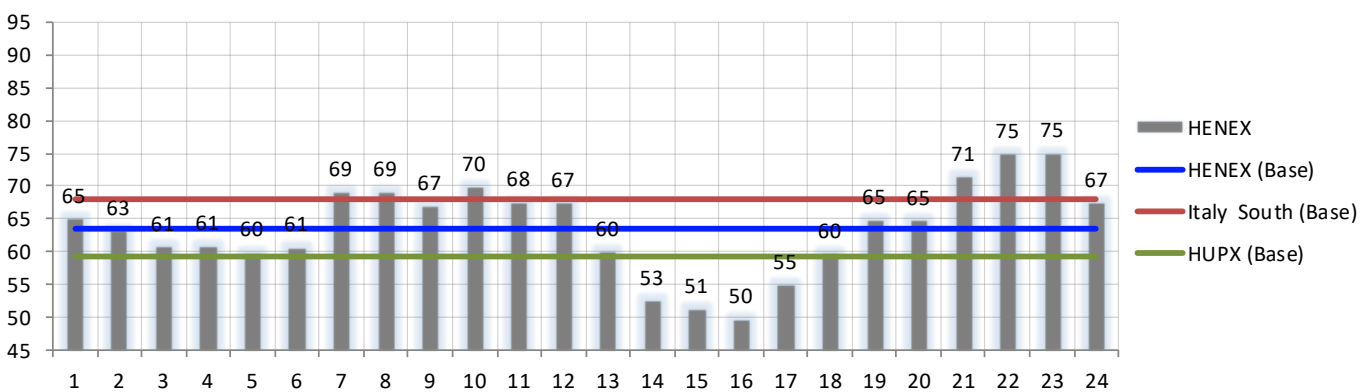
FRI 14.05.	BASE	PEAK	1	2	3	4	5	6	7	8	9	10	11	12	13	14	15	16	17	18	19	20	21	22	23	24
GR Price	73.6	72.1	70.7	66.8	67.0	66.8	66.9	73.8	84.2	84.6	89.2	80.0	76.6	71.9	67.3	60.4	60.2	62.4	69.2	70.5	75.9	82.0	82.9	80.0	84.5	72.2

Change compared to previous day (MW, EUR/MW)

Change	BASE	PEAK	1	2	3	4	5	6	7	8	9	10	11	12	13	14	15	16	17	18	19	20	21	22	23	24
Price	9.9	11.3	5.6	3.6	6.3	5.9	7.0	13.1	15.0	15.6	22.3	10.1	9.0	4.6	7.3	7.8	8.9	12.6	14.2	10.8	11.1	17.2	11.4	5.1	9.6	4.8
Load	-46	-68	-22	-31	-36	-32	-27	-47	-48	-66	-95	-64	-42	-66	-119	-152	-147	-76	-81	-35	30	24	-32	-32	-22	104
RES	74	131	162	160	161	164	168	173	183	195	208	216	220	217	208	171	162	136	102	39	-19	-85	-155	-236	-329	-433
NTC																										
GR > IT	0	0	0	0	0	0	0	0	0	0	0	0	0	0	0	0	0	0	0	0	0	0	0	0	0	0
IT > GR	0	0	0	0	0	0	0	0	0	0	0	0	0	0	0	0	0	0	0	0	0	0	0	0	0	0
North > GR	0	0	0	0	0	0	0	0	0	0	0	0	0	0	0	0	0	0	0	0	0	0	0	0	0	0
GR > North	0	0	0	0	0	0	0	0	0	0	0	0	0	0	0	0	0	0	0	0	0	0	0	0	0	0

Previous day HENEX settlement and spreads (EUR/MW)

13.05.2021 - SPOT Settlement

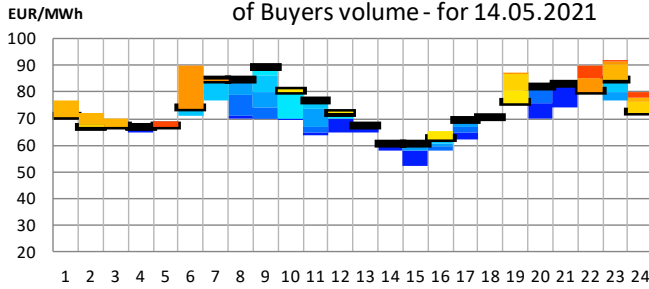


THU 13.05.	BASE	PEAK	1	2	3	4	5	6	7	8	9	10	11	12	13	14	15	16	17	18	19	20	21	22	23	24	
GR Price	63.6	60.8	65.0	63.2	60.7	60.9	59.9	60.7	69.2	69.1	66.9	69.9	67.6	67.4	60.0	52.5	51.4	49.8	55.0	59.7	64.8	64.7	71.4	74.9	75.0	67.4	
GR-HUPX	4.3	2.5	4.1	7.5	7.6	8.3	7.9	8.3	12.2	5.1	0.0	7.2	10.6	12.6	5.0	-0.5	-1.1	-3.4	-7.7	4.7	4.7	-2.2	-2.9	3.9	7.0	5.4	
GR-IBEX	0.6	0.0	0.0	0.0	0.0	3.6	3.4	4.5	3.3	0.0	0.0	0.0	0.0	0.0	0.0	0.0	0.0	0.0	0.0	0.0	0.0	0.0	0.0	0.0	0.0		
GR-IT South	-4.2	-4.7	0.0	0.0	0.0	0.0	0.0	0.0	0.0	0.0	-13.7	-19.4	-5.5	0.0	0.0	0.0	0.0	0.0	0.0	0.0	-11.2	-20.6	-17.0	-5.9	-3.4	-5.2	
GR-PUN	-7.6	-11.4	0.0	0.0	0.0	0.0	0.0	0.0	0.0	0.0	-13.7	-17.2	-9.3	-7.3	-4.2	-6.2	-11.5	-16.3	-13.8	-11.3	-7.9	-11.2	-20.6	-17.0	-5.9	-3.4	-5.2

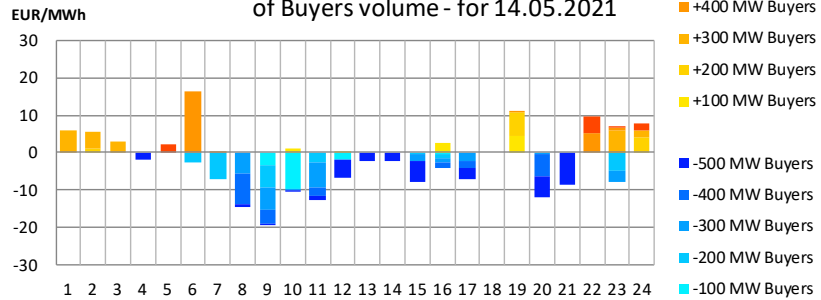
Forecasted HENEX sensitivity (D+1)

Potential change of HENEX price in case of

HENEX hourly price change In case of increase/decrease of Buyers volume - for 14.05.2021



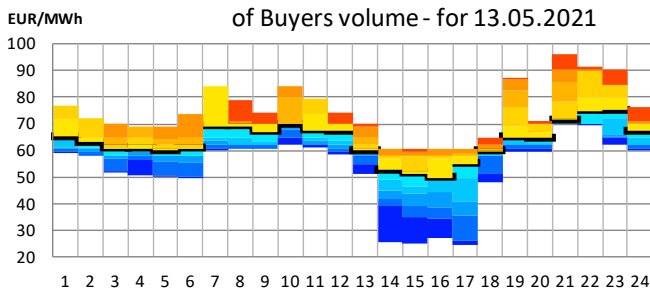
HENEX relative price change in case of increase/decrease of Buyers volume - for 14.05.2021



SELL	-500 MW	-400 MW	-300 MW	-200 MW	-100 MW	HENEX FORECAST	+100 MW	+200 MW	+300 MW	+400 MW	+500 MW
1	70.7	70.7	70.7	70.7	70.7	70.7	70.7	70.7	76.6	76.6	76.6
2	66.8	66.8	66.8	66.8	66.8	66.8	66.8	67.8	72.2	72.2	72.2
3	67.0	67.0	67.0	67.0	67.0	67.0	67.0	67.0	69.9	69.9	69.9
4	65.0	66.8	66.8	66.8	66.8	66.8	66.8	66.8	66.8	66.8	66.8
5	66.9	66.9	66.9	66.9	66.9	66.9	66.9	66.9	66.9	66.9	69.2
6	71.3	71.3	71.3	71.3	73.8	73.8	73.8	73.8	73.8	90.0	90.0
7	77.0	77.0	77.0	77.0	84.2	84.2	84.2	84.2	84.2	84.2	84.2
8	69.9	70.9	78.8	84.6	84.6	84.6	84.6	84.6	84.6	84.6	84.6
9	69.9	70.2	73.9	79.8	86.0	89.2	89.2	89.2	89.2	89.2	89.2
10	69.7	69.9	69.9	70.2	70.2	80.0	81.0	81.0	81.0	81.0	81.0
11	64.0	64.8	67.1	73.8	76.6	76.6	76.6	76.6	76.6	76.6	76.6
12	65.0	69.9	69.9	69.9	69.9	71.9	72.4	72.4	72.4	72.4	72.4
13	65.0	67.3	67.3	67.3	67.3	67.3	67.3	67.3	67.3	67.3	67.3
14	58.1	60.4	60.4	60.4	60.4	60.4	60.4	60.4	60.4	60.4	60.4
15	52.5	58.1	58.1	59.7	60.2	60.2	60.2	60.2	60.2	60.2	60.2
16	58.1	58.1	59.7	60.9	62.0	62.4	65.1	65.1	65.1	65.1	65.1
17	62.0	65.0	67.0	69.2	69.2	69.2	69.2	69.2	69.2	69.2	69.2
18	70.5	70.5	70.5	70.5	70.5	70.5	70.5	70.5	70.5	70.5	70.5
19	75.9	75.9	75.9	75.9	75.9	75.9	80.4	86.5	86.5	86.6	86.6
20	70.2	75.5	81.6	82.0	82.0	82.0	82.0	82.0	82.0	82.0	82.0
21	74.4	82.9	82.9	82.9	82.9	82.9	82.9	82.9	82.9	82.9	82.9
22	80.0	80.0	80.0	80.0	80.0	80.0	80.0	80.0	80.0	85.0	89.7
23	76.5	76.5	76.5	79.8	84.5	84.5	84.6	84.6	90.6	91.2	91.2
24	72.2	72.2	72.2	72.2	72.2	72.2	72.2	76.1	78.0	78.0	80.0

HENEX sensitivity for D

HENEX hourly price change In case of increase/decrease of Buyers volume - for 13.05.2021



HENEX relative price change in case of increase/decrease of Buyers volume - for 13.05.2021

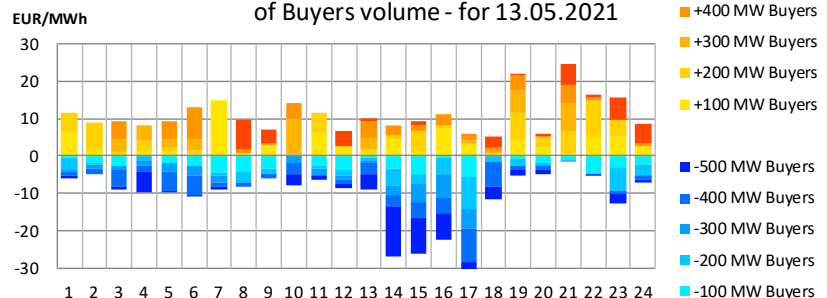
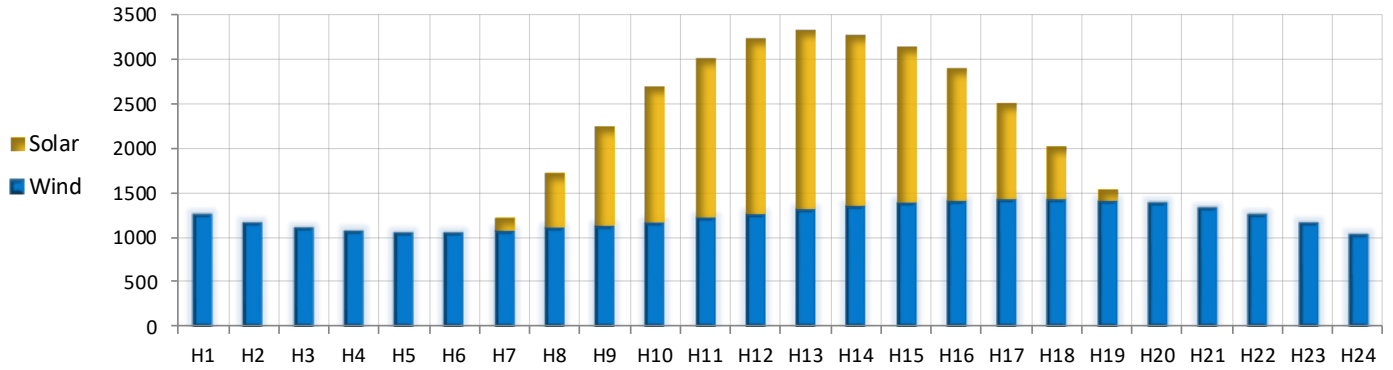


Table of HENEX sensitivity for D available in excel data file

Renewable generation forecast

Greek RES generation forecast

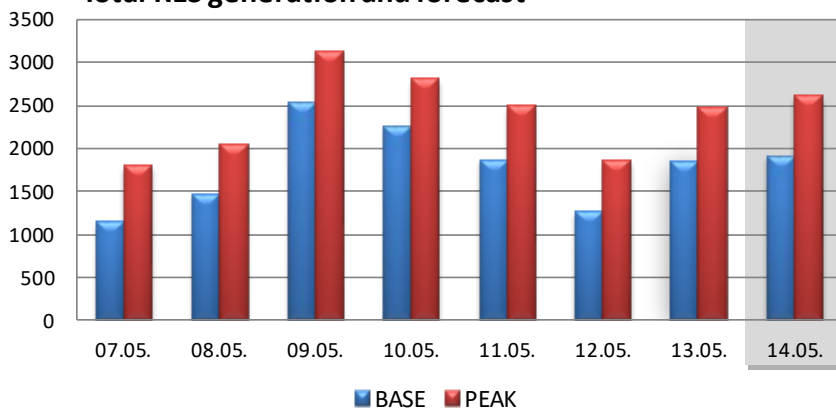


Wind	BASE	PEAK	1	2	3	4	5	6	7	8	9	10	11	12	13	14	15	16	17	18	19	20	21	22	23	24
FRI 14.05. (D+1)	1236	1329	1253	1173	1117	1082	1066	1066	1079	1104	1138	1178	1222	1267	1312	1353	1388	1414	1430	1433	1419	1388	1336	1261	1160	1031
THU 13.05.	1175	1223	1090	1013	956	918	897	892	901	922	953	992	1039	1090	1145	1201	1257	1311	1362	1407	1444	1473	1491	1497	1489	1464
WED 12.05.	585	563	438	454	498	502	465	351	259	203	173	186	246	332	404	460	532	665	784	871	989	1116	1079	1002	1029	1002
TUE 11.05.	1128	1088	1424	1419	1469	1530	1635	1663	1585	1403	1369	1405	1377	1303	1217	1099	1005	1028	947	844	754	703	586	486	419	405
MON 10.05.	1538	1431	1783	1861	1887	1887	1857	1895	1839	1711	1639	1616	1561	1539	1497	1458	1419	1387	1370	1292	1216	1174	1169	1217	1272	1368
SUN 09.05.	1877	1880	1835	1902	1992	1977	2040	2046	2022	1927	1915	1951	1937	1943	1917	1876	1870	1879	1905	1873	1761	1730	1728	1680	1668	1676
SAT 08.05.	794	761	678	789	658	640	483	306	196	187	221	264	316	459	613	682	840	943	1143	1235	1249	1166	1230	1416	1607	1736
FRI 07.05.	553	669	280	255	232	228	251	304	297	334	369	448	530	606	706	798	841	796	732	708	719	775	877	810	762	617

Solar	BASE	PEAK	1	2	3	4	5	6	7	8	9	10	11	12	13	14	15	16	17	18	19	20	21	22	23	24
FRI 14.05. (D+1)	671	1280	0	0	0	0	0	0	137	616	1119	1511	1791	1959	2016	1921	1759	1478	1085	593	130	0	0	0	0	0
THU 13.05.	658	1255	0	0	0	0	0	0	133	603	1097	1481	1755	1919	1975	1902	1728	1445	1052	580	124	0	0	0	0	0
WED 12.05.	680	1288	0	0	0	0	0	28	201	622	1174	1623	1915	2070	2084	1970	1719	1368	928	465	138	7	0	0	0	0
TUE 11.05.	733	1394	0	0	0	0	0	27	206	646	1220	1683	1995	2174	2220	2137	1924	1578	1094	540	152	7	0	0	0	0
MON 10.05.	722	1373	0	0	0	0	0	24	198	621	1176	1637	1957	2146	2187	2115	1913	1573	1088	532	148	7	0	0	0	0
SUN 09.05.	651	1239	0	0	0	0	0	21	181	548	1028	1443	1736	1907	1974	1925	1755	1451	1002	495	141	6	0	0	0	0
SAT 08.05.	674	1282	0	0	0	0	0	18	181	593	1141	1592	1891	2058	2020	1934	1733	1415	973	482	135	5	0	0	0	0
FRI 07.05.	593	1131	0	0	0	0	0	15	154	484	924	1306	1584	1760	1857	1771	1588	1302	899	452	128	4	0	0	0	0

RES total	BASE	PEAK	1	2	3	4	5	6	7	8	9	10	11	12	13	14	15	16	17	18	19	20	21	22	23	24
FRI 14.05. (D+1)	1908	2609	1253	1173	1117	1082	1066	1066	1217	1720	2257	2689	3013	3226	3328	3274	3147	2892	2515	2025	1549	1388	1336	1261	1160	1031
THU 13.05.	1833	2478	1090	1013	956	918	897	892	1034	1525	2050	2473	2793	3009	3120	3103	2985	2756	2414	1987	1568	1473	1491	1497	1489	1464
WED 12.05.	1862	2481	1424	1419	1469	1530	1635	1690	1791	2049	2589	3088	3372	3477	3437	3236	2929	2606	2041	1384	906	710	586	486	419	405
TUE 11.05.	2260	2804	1783	1861	1887	1887	1857	1919	2037	2332	2815	3253	3518	3685	3684	3573	3332	2960	2458	1824	1364	1181	1169	1217	1272	1368
MON 10.05.	2528	3118	1835	1902	1992	1977	2040	2067	2203	2475	2943	3394	3673	3850	3891	3801	3625	3330	2907	2368	1902	1736	1728	1680	1668	1676
SUN 09.05.	1468	2043	678	789	658	640	483	324	377	780	1362	1856	2207	2517	2633	2616	2573	2358	2116	1717	1384	1171	1230	1416	1607	1736
SAT 08.05.	1146	1800	280	255	232	228	251	319	451	818	1293	1754	2114	2366	2563	2569	2429	2098	1631	1160	847	779	877	810	762	617
FRI 07.05.	1146	1800	280	255	232	228	251	319	451	818	1293	1754	2114	2366	2563	2569	2429	2098	1631	1160	847	779	877	810	762	617

Total RES generation and forecast

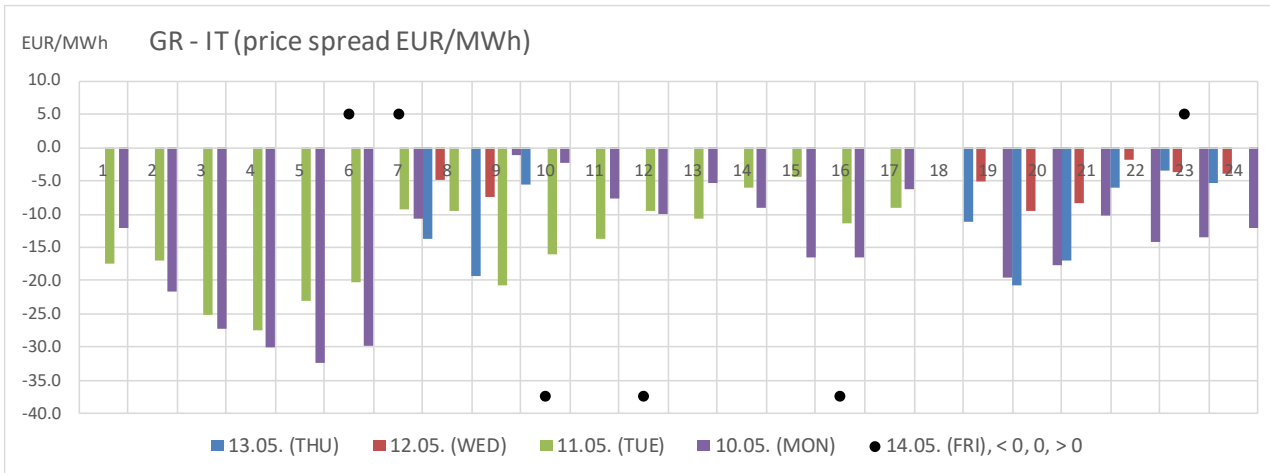


Base	Wind	Solar	Total
07.05.	669	1,131	1,800
08.05.	761	1,282	2,043
09.05.	1,880	1,239	3,118
10.05.	1,431	1,373	2,804
11.05.	1,088	1,394	2,481
12.05.	563	1,288	1,852
13.05.	1,223	1,255	2,478
14.05.	1,329	1,280	2,609

GR-IT South price spread forecast and history

GR - IT South	BASE	PEAK	1	2	3	4	5	6	7	8	9	10	11	12	13	14	15	16	17	18	19	20	21	22	23	24	
FRI 14.05.			0	0	0	0	0	>0	>0	0	0	<0	0	<0	0	0	0	<0	0	0	0	0	0	0	>0	0	
THU 13.05.	-4.2	-5.7	0.0	0.0	0.0	0.0	0.0	0.0	0.0	-13.7	-19.4	-5.5	0.0	0.0	0.0	0.0	0.0	0.0	0.0	0.0	-11.2	-20.6	-17.0	-5.9	-3.4	-5.2	
WED 12.05.	-1.9	-2.3	0.0	0.0	0.0	0.0	0.0	0.0	0.0	-4.9	-7.3	0.0	0.0	0.0	0.0	0.0	0.0	0.0	0.0	0.0	0.0	-5.0	-9.6	-8.3	-1.8	-3.8	-4.0
TUE 11.05.	-10.4	-7.8	-17.3	-17.0	-25.2	-27.6	-23.0	-20.3	-9.3	-9.5	-20.7	-16.1	-13.7	-9.6	-10.7	-5.9	-4.4	-11.3	-9.0	0.0	0.0	0.0	0.0	0.0	0.0	0.0	
MON 10.05.	-13.6	-9.4	-12.1	-21.7	-27.3	-30.0	-32.4	-29.8	-10.6	0.0	-1.1	-2.2	-7.7	-10.1	-5.4	-9.1	-16.6	-16.6	-6.2	0.0	-19.6	-17.7	-10.2	-14.3	-13.4	-12.1	
SUN 09.05.	-39.0	-40.2	-10.0	-28.5	-26.1	-28.5	-28.5	-64.0	-47.0	-51.0	-45.9	-69.9	-41.0	-39.4	-32.1	-49.8	-49.3	-57.1	-46.6	-33.6	0.0	-25.7	-32.9	-35.6	-44.4	-49.7	
SAT 08.05.	-15.4	-16.2	-2.6	0.0	-3.8	-2.7	-1.6	-10.1	-4.1	-27.0	-29.1	-18.8	-20.8	-12.2	-2.5	0.0	-9.6	-11.3	-6.0	-16.8	-30.2	-28.2	-24.7	-32.2	-35.5	-40.1	
FRI 07.05.	-5.7	-5.2	-6.6	-3.8	-2.4	-4.7	-6.5	-7.6	-3.0	-2.3	-9.0	-11.0	-12.4	0.0	0.0	0.0	0.0	0.0	0.0	-7.0	-15.6	-12.5	0.0	-7.7	-9.7	-15.5	

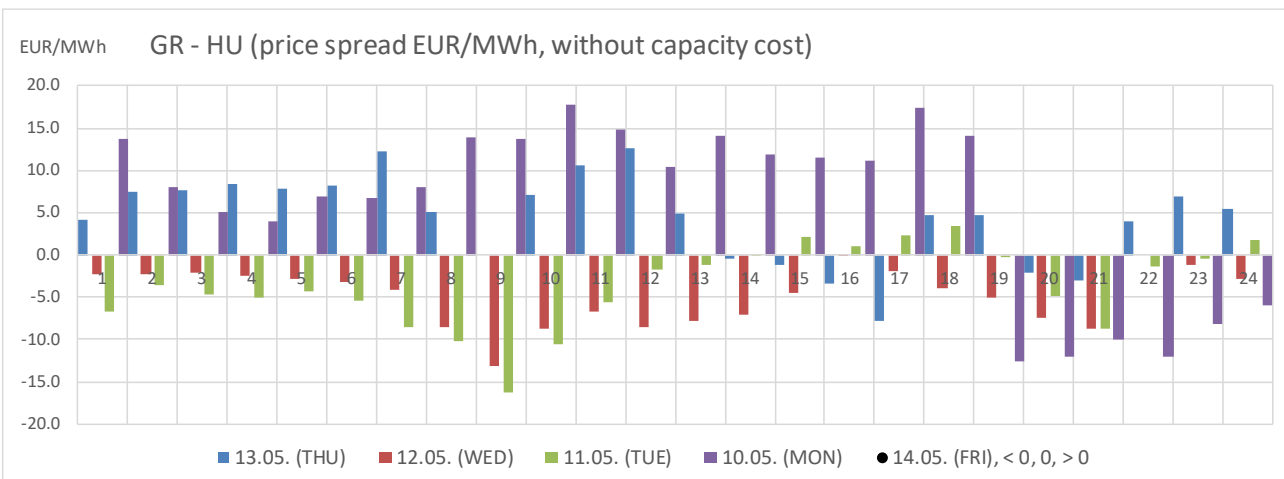
- Greek market is decoupled from Italy and above Italy (red color, >0)
- Greek market is decoupled from Italy and below Italy (green color, <0)



GR-HU price spread forecast and history

GR - HUPX	BASE	PEAK	1	2	3	4	5	6	7	8	9	10	11	12	13	14	15	16	17	18	19	20	21	22	23	24
FRI 14.05.			5	5	5	5	5	5	0	0	0	0	0	0	0	0	0	0	5	0	0	0	-5	0	0	0
THU 13.05.	4.3	2.1	4.1	7.5	7.6	8.3	7.9	8.3	12.2	5.1	0.0	7.2	10.6	12.6	5.0	-0.5	-1.1	-3.4	-7.7	4.7	4.7	-2.2	-2.9	3.9	7.0	5.4
WED 12.05.	-4.8	-6.4	-2.2	-2.3	-2.1	-2.4	-2.9	-3.2	-4.2	-8.6	-13.2	-8.7	-6.7	-8.5	-7.8	-7.0	-4.4	0.1	-1.8	-4.0	-5.1	-7.5	-8.8	0.0	-1.2	-2.9
TUE 11.05.	-3.7	-3.1	-6.6	-3.6	-4.7	-5.0	-4.2	-5.3	-8.5	-10.2	-16.3	-10.6	-5.6	-1.7	-1.2	0.0	2.1	1.0	2.2	3.5	-0.3	-4.8	-8.7	-1.4	-0.5	1.9
MON 10.05.	5.9	7.9	13.7	8.0	5.0	4.0	7.0	6.8	8.0	14.0	13.7	17.8	14.9	10.5	14.1	12.0	11.5	11.2	17.5	14.2	-12.6	-12.0	-10.1	-12.1	-8.2	-6.0
SUN 09.05.	25.5	20.0	53.1	47.5	60.1	58.5	58.5	23.2	40.0	35.9	32.0	12.0	24.9	23.9	28.9	15.0	35.0	8.5	19.5	42.2	30.3	3.5	-15.4	-2.0	-12.3	-9.9
SAT 08.05.	7.9	9.5	4.1	4.9	4.2	5.4	7.5	11.2	18.3	3.7	4.0	4.3	4.5	12.3	14.8	17.7	14.3	16.1	19.0	4.2	4.0	5.0	3.8	1.2	2.1	2.0
FRI 07.05.	-3.2	-4.5	-1.0	-1.0	-1.3	-1.7	-2.0	-1.1	-0.9	-0.9	-4.0	-6.5	-7.8	0.0	-4.7	-17.7	-18.9	-9.0	6.7	3.0	0.0	-4.9	4.9	-2.0	-2.3	-4.0

- D+1 : forecasted HENEX hourly price - Forecasted HUPX hourly price
- Greek market is above HUPX (red color, >0)
- Greek market is below HUPX (green color, <0)



GR-HU cross border arbitration opportunities

GR-HUPX	BASE	PEAK	1	2	3	4	5	6	7	8	9	10	11	12	13	14	15	16	17	18	19	20	21	22	23	24	
FRI 14.05. Opportunity:			Green																	Green			Red				
THU 13.05.	4.8	2.4	5.0	7.9	8.0	9.0	8.6	9.1	12.6	5.5	0.3	7.5	10.9	12.9	5.3	-0.1	-0.7	-3.1	-7.4	5.0	5.0	-1.8	-2.6	4.3	7.8	6.2	
WED 12.05.	-4.4	-6.1	-1.4	-1.8	-1.5	-1.9	-2.4	-2.7	-3.9	-8.3	-12.9	-8.4	-6.4	-8.2	-7.5	-6.7	-4.1	0.4	-1.5	-3.7	-4.8	-7.2	-8.5	0.3	-0.9	-2.6	
TUE 11.05.	-3.0	-2.6	-5.7	-2.7	-3.7	-4.1	-3.3	-4.4	-8.1	-9.8	-16.0	-10.2	-5.2	-1.3	-0.8	0.4	2.5	1.4	3.0	4.3	0.5	-4.0	-7.9	-0.6	0.4	2.7	
MON 10.05.	6.5	8.1	14.5	9.7	6.7	5.7	8.7	7.6	8.2	14.2	13.9	18.0	15.1	10.6	14.4	12.2	11.7	11.5	17.7	14.4	-12.4	-11.7	-9.8	-11.8	-7.4	-5.2	
SUN 09.05.	27.3	21.3	55.6	49.9	62.5	61.0	61.3	26.1	42.3	36.8	32.9	12.7	26.0	25.0	30.1	16.2	36.2	9.4	20.4	42.9	31.1	5.2	-10.8	0.1	-10.4	-8.0	
SAT 08.05.	8.5	10.2	5.1	5.9	5.2	6.3	8.0	11.8	18.8	4.2	4.4	5.1	5.3	13.1	15.6	18.5	15.1	16.9	19.4	4.6	4.4	5.4	4.2	1.6	2.5	2.4	
FRI 07.05.	-2.5	-4.0	0.3	0.3	0.0	-0.4	-0.7	-0.1	-0.4	-0.4	-3.5	-6.0	-7.3	0.5	-4.2	-17.2	-18.4	-8.5	7.2	3.6	0.5	-4.3	5.6	-1.4	-1.4	-3.1	

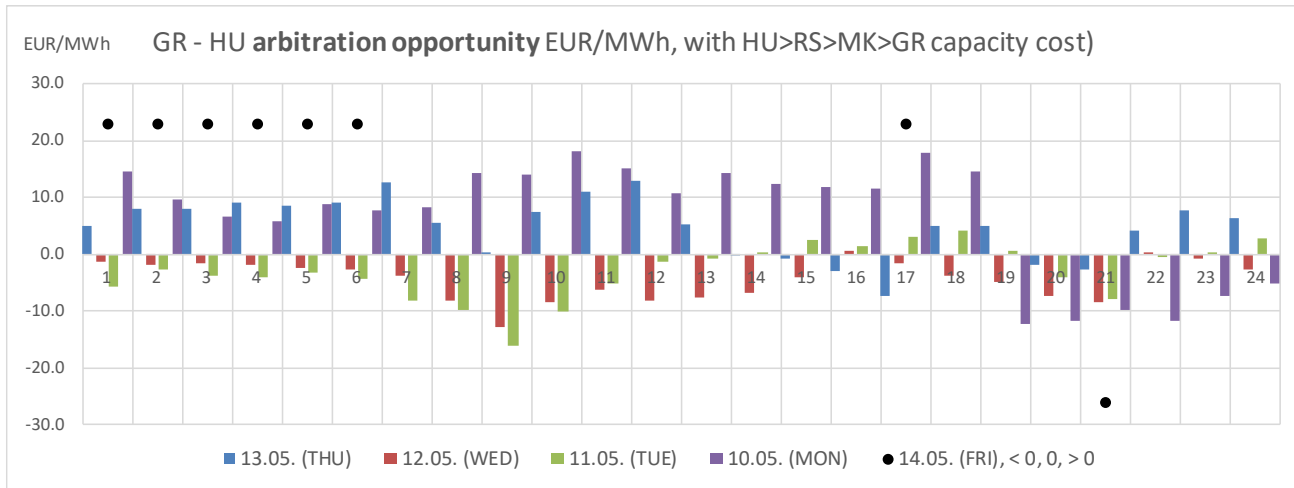
Green: High arbitration opportunity **forecast:** Deliver from HUPX to HENEX

Red: High arbitration opportunity **forecast:** Deliver HENEX to HUPX

History: Physical delivery from HUPX to HENEX with price of daily auctions $HU > RS + RS > MK + MK > GR$ included

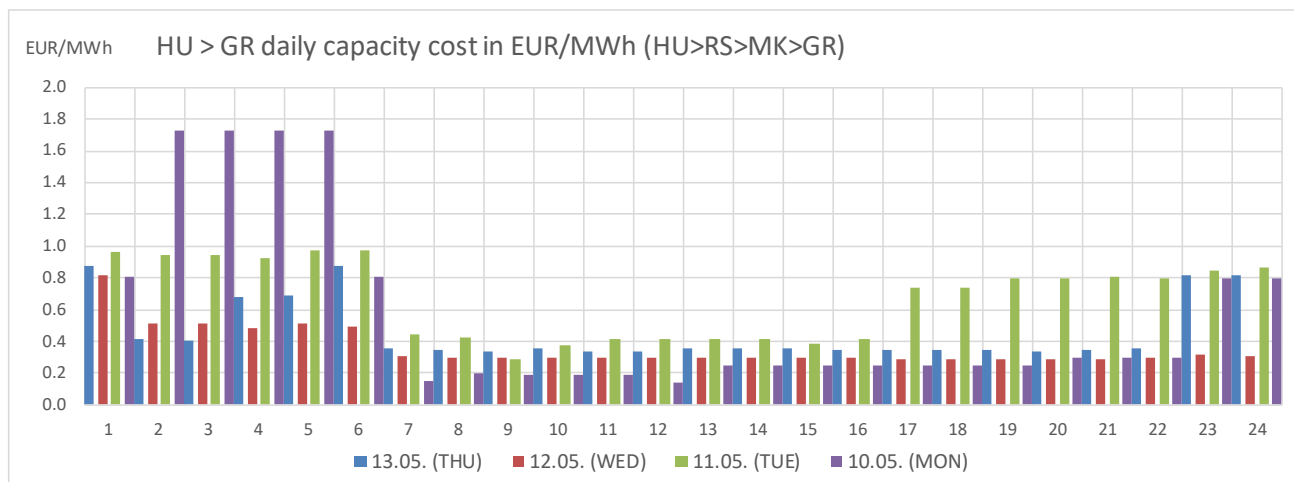
- Greek market is above HUPX (red color, >0)

- Greek market is below HUPX (green color, <0)

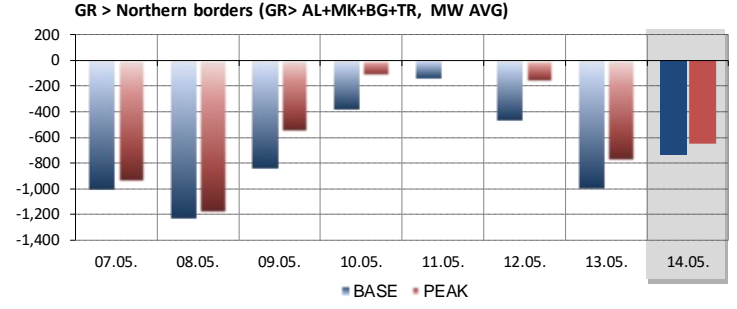
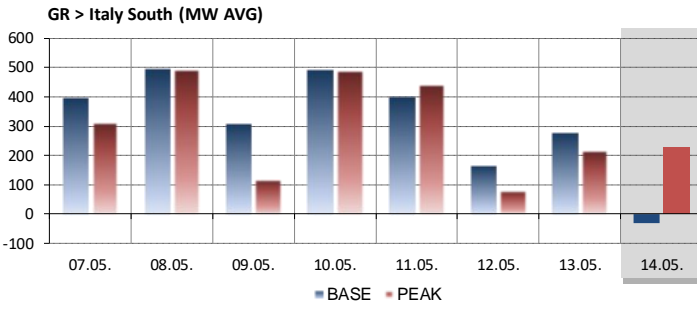


Daily capacity rent price (HU>RS>MK>GR)

HUPX > GR	BASE	PEAK	1	2	3	4	5	6	7	8	9	10	11	12	13	14	15	16	17	18	19	20	21	22	23	24
13.05.	0.5	0.4	0.9	0.4	0.4	0.7	0.7	0.9	0.4	0.4	0.3	0.4	0.3	0.3	0.4	0.4	0.4	0.4	0.4	0.4	0.4	0.3	0.4	0.4	0.8	0.8
12.05.	0.4	0.3	0.8	0.5	0.5	0.5	0.5	0.5	0.3	0.3	0.3	0.3	0.3	0.3	0.3	0.3	0.3	0.3	0.3	0.3	0.3	0.3	0.3	0.3	0.3	0.3
11.05.	0.7	0.5	1.0	0.9	0.9	0.9	1.0	1.0	0.4	0.4	0.3	0.4	0.4	0.4	0.4	0.4	0.4	0.4	0.7	0.7	0.8	0.8	0.8	0.8	0.9	0.9
10.05.	0.6	0.2	0.8	1.7	1.7	1.7	1.7	0.8	0.2	0.2	0.2	0.2	0.2	0.1	0.3	0.3	0.3	0.3	0.3	0.3	0.3	0.3	0.3	0.3	0.8	0.8
09.05.	1.7	1.3	2.5	2.5	2.4	2.5	2.8	2.8	2.3	0.9	0.9	0.7	1.1	1.1	1.2	1.2	1.2	0.9	0.9	0.7	0.8	1.8	4.6	2.1	1.9	1.9
08.05.	0.6	0.6	1.0	1.0	1.0	1.0	0.5	0.7	0.5	0.4	0.4	0.8	0.8	0.8	0.8	0.8	0.8	0.8	0.5	0.4	0.4	0.4	0.4	0.4	0.4	0.4
07.05.	0.7	0.5	1.3	1.3	1.3	1.3	1.3	0.9	0.5	0.5	0.5	0.5	0.6	0.5	0.5	0.5	0.5	0.5	0.5	0.5	0.5	0.5	0.7	0.5	0.9	0.9



Commercial flows forecast and history



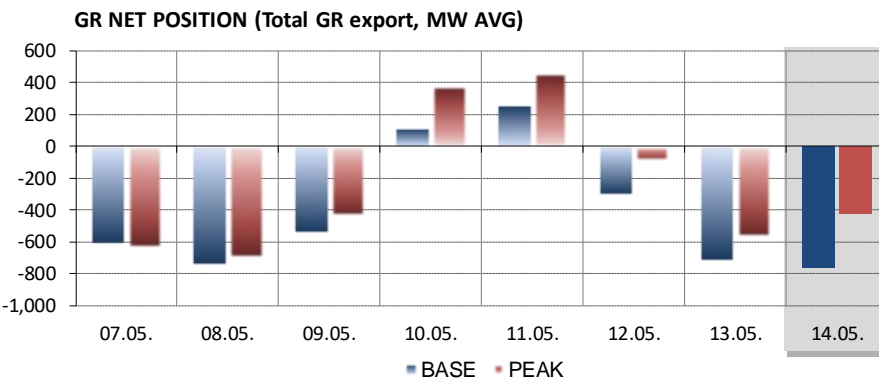
HENEX > IT South		BASE	PEAK	1	2	3	4	5	6	7	8	9	10	11	12	13	14	15	16	17	18	19	20	21	22	23	24
FRI	14.05.																										
THU	13.05.	278	239	286	447	294	414	109	-135	160	500	500	500	265	298	111	-99	-28	-51	-91	203	500	500	500	500	500	500
WED	12.05.	165	112	388	108	32	13	5	-35	0	500	500	65	-199	-302	-348	-485	-364	266	372	452	500	500	500	500	500	500
TUE	11.05.	402	393	500	500	500	500	500	500	500	500	500	500	500	500	500	500	500	500	500	350	360	84	-191	334	64	155
MON	10.05.	494	492	500	500	500	500	500	500	500	453	500	500	500	500	500	500	500	500	500	397	500	500	500	500	500	500
SUN	09.05.	310	149	500	500	500	500	500	500	500	500	500	0	0	0	0	0	0	0	0	0	432	500	500	500	500	500
SAT	08.05.	497	495	500	499	500	500	500	500	500	500	500	500	500	500	500	430	500	500	500	500	500	500	500	500	500	500
FRI	07.05.	399	314	500	500	500	500	500	500	500	500	500	500	500	440	-25	-222	-45	147	440	500	500	500	346	500	500	500

HENEX > North		BASE	PEAK	1	2	3	4	5	6	7	8	9	10	11	12	13	14	15	16	17	18	19	20	21	22	23	24
FRI	14.05.*																										
THU	13.05.	-998	-778	-1113	-1335	-1394	-1396	-1392	-1400	-1417	-939	-759	-1056	-910	-1033	-911	-554	-348	-241	-449	-1048	-1119	-958	-723	-948	-1300	-1217
WED	12.05.	-468	-171	-1138	-998	-1051	-1009	-1024	-1121	-691	-24	188	51	-44	-29	-121	-69	-9	-364	-523	-501	-552	-52	-200	-586	-675	-688
TUE	11.05.	-146	12	-305	-428	-405	-433	-459	-397	87	317	484	465	355	205	79	143	98	-54	-424	-628	-461	-132	22	-409	-526	-697
MON	10.05.	-381	-132	-971	-900	-808	-778	-803	-956	-743	-489	-330	-218	-91	-42	80	128	150	2	-212	-497	-172	-153	-366	-197	-391	-391
SUN	09.05.	-847	-584	-1353	-1341	-1262	-1321	-1267	-1317	-1079	-929	-833	-425	-596	-544	-228	-175	-215	-399	-791	-1000	-852	-937	-983	-911	-982	-982
SAT	08.05.	-1233	-1199	-1198	-1322	-1304	-1225	-1327	-1429	-1501	-1152	-1070	-1076	-1180	-1240	-1209	-1213	-1130	-1165	-1271	-1229	-1254	-1230	-1324	-1107	-1161	-1263
FRI	07.05.	-1009	-950	-1097	-1124	-1106	-1037	-1069	-1121	-1099	-917	-819	-810	-931	-1111	-945	-611	-538	-855	-1233	-1217	-1187	-1029	-1066	-1054	-1110	-1138

*: Forecast of commercial flows on GR>AL, GR>MK, GR>BG and GR>TR borders

- Green: Greece exporting from Italy / North borders
- Red: Greece importing to Italy / North borders

GR NET Position		BASE	PEAK	1	2	3	4	5	6	7	8	9	10	11	12	13	14	15	16	17	18	19	20	21	22	23	24
FRI	14.05.																										
THU	13.05.	-720	-539	-827	-888	-1100	-982	-1283	-1535	-1257	-439	-259	-556	-645	-735	-800	-653	-376	-292	-540	-845	-619	-458	-223	-448	-800	-717
WED	12.05.	-303	-59	-750	-890	-1019	-996	-1019	-1156	-691	476	688	116	-243	-331	-469	-554	-373	-98	-151	-49	-52	448	300	-86	-175	-188
TUE	11.05.	256	404	195	72	95	67	41	103	587	817	984	965	855	705	579	643	598	446	76	-278	-101	-48	-169	-75	-462	-542
MON	10.05.	113	360	-471	-400	-308	-278	-303	-456	-243	-36	170	282	409	458	580	628	650	502	288	-100	328	347	134	303	109	109
SUN	09.05.	-538	-435	-853	-841	-762	-821	-767	-817	-579	-429	-333	-425	-596	-595	-544	-228	-175	-215	-399	-791	-568	-352	-437	-483	-411	-482
SAT	08.05.	-735	-705	-698	-823	-804	-725	-827	-929	-1001	-652	-570	-576	-680	-740	-709	-783	-630	-665	-771	-729	-754	-730	-824	-607	-661	-763
FRI	07.05.	-610	-636	-597	-624	-606	-537	-569	-621	-599	-417	-319	-310	-431	-671	-970	-833	-583	-708	-793	-717	-687	-529	-720	-554	-610	-638



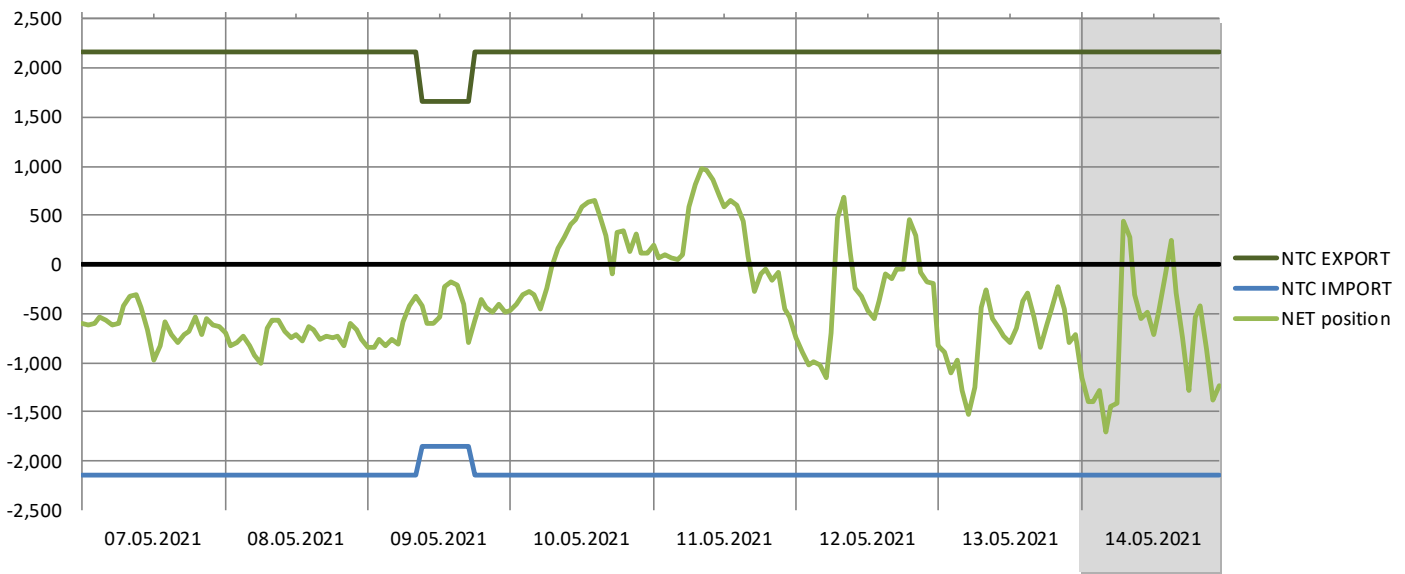
Net transfer capacities

D+1 14.05.	1	2	3	4	5	6	7	8	9	10	11	12	13	14	15	16	17	18	19	20	21	22	23	24
GR > IT	500	500	500	500	500	500	500	500	500	500	500	500	500	500	500	500	500	500	500	500	500	500	500	500
GR > AL	400	400	400	400	400	400	400	400	400	400	400	400	400	400	400	400	400	400	400	400	400	400	400	400
GR > MK	450	450	450	450	450	450	450	450	450	450	450	450	450	450	450	450	450	450	450	450	450	450	450	450
GR > BG	600	600	600	600	600	600	600	600	600	600	600	600	600	600	600	600	600	600	600	600	600	600	600	600
GR > TR	216	216	216	216	216	216	216	216	216	216	216	216	216	216	216	216	216	216	216	216	216	216	216	216
Total	2166	2166	2166	2166	2166	2166	2166	2166	2166	2166	2166	2166	2166	2166	2166	2166	2166	2166	2166	2166	2166	2166	2166	2166
IT > GR	500	500	500	500	500	500	500	500	500	500	500	500	500	500	500	500	500	500	500	500	500	500	500	500
AL > GR	400	400	400	400	400	400	400	400	400	400	400	400	400	400	400	400	400	400	400	400	400	400	400	400
MK > GR	500	500	500	500	500	500	500	500	500	500	500	500	500	500	500	500	500	500	500	500	500	500	500	500
BG > GR	700	700	700	700	700	700	700	700	700	700	700	700	700	700	700	700	700	700	700	700	700	700	700	700
TR > GR	50	50	50	50	50	50	50	50	50	50	50	50	50	50	50	50	50	50	50	50	50	50	50	50
Total	2150	2150	2150	2150	2150	2150	2150	2150	2150	2150	2150	2150	2150	2150	2150	2150	2150	2150	2150	2150	2150	2150	2150	2150

NTC change compared to previous day (MW)

NTC Change	1	2	3	4	5	6	7	8	9	10	11	12	13	14	15	16	17	18	19	20	21	22	23	24
GR > IT	0	0	0	0	0	0	0	0	0	0	0	0	0	0	0	0	0	0	0	0	0	0	0	0
GR > AL	0	0	0	0	0	0	0	0	0	0	0	0	0	0	0	0	0	0	0	0	0	0	0	0
GR > MK	0	0	0	0	0	0	0	0	0	0	0	0	0	0	0	0	0	0	0	0	0	0	0	0
GR > BG	0	0	0	0	0	0	0	0	0	0	0	0	0	0	0	0	0	0	0	0	0	0	0	0
GR > TR	0	0	0	0	0	0	0	0	0	0	0	0	0	0	0	0	0	0	0	0	0	0	0	0
Total	0	0	0	0	0	0	0	0	0	0	0	0	0	0	0	0	0	0	0	0	0	0	0	0
IT > GR	0	0	0	0	0	0	0	0	0	0	0	0	0	0	0	0	0	0	0	0	0	0	0	0
AL > GR	0	0	0	0	0	0	0	0	0	0	0	0	0	0	0	0	0	0	0	0	0	0	0	0
MK > GR	0	0	0	0	0	0	0	0	0	0	0	0	0	0	0	0	0	0	0	0	0	0	0	0
BG > GR	0	0	0	0	0	0	0	0	0	0	0	0	0	0	0	0	0	0	0	0	0	0	0	0
TR > GR	0	0	0	0	0	0	0	0	0	0	0	0	0	0	0	0	0	0	0	0	0	0	0	0
Total	0	0	0	0	0	0	0	0	0	0	0	0	0	0	0	0	0	0	0	0	0	0	0	0

GR NTCs and Net position (history and forecast, MW)



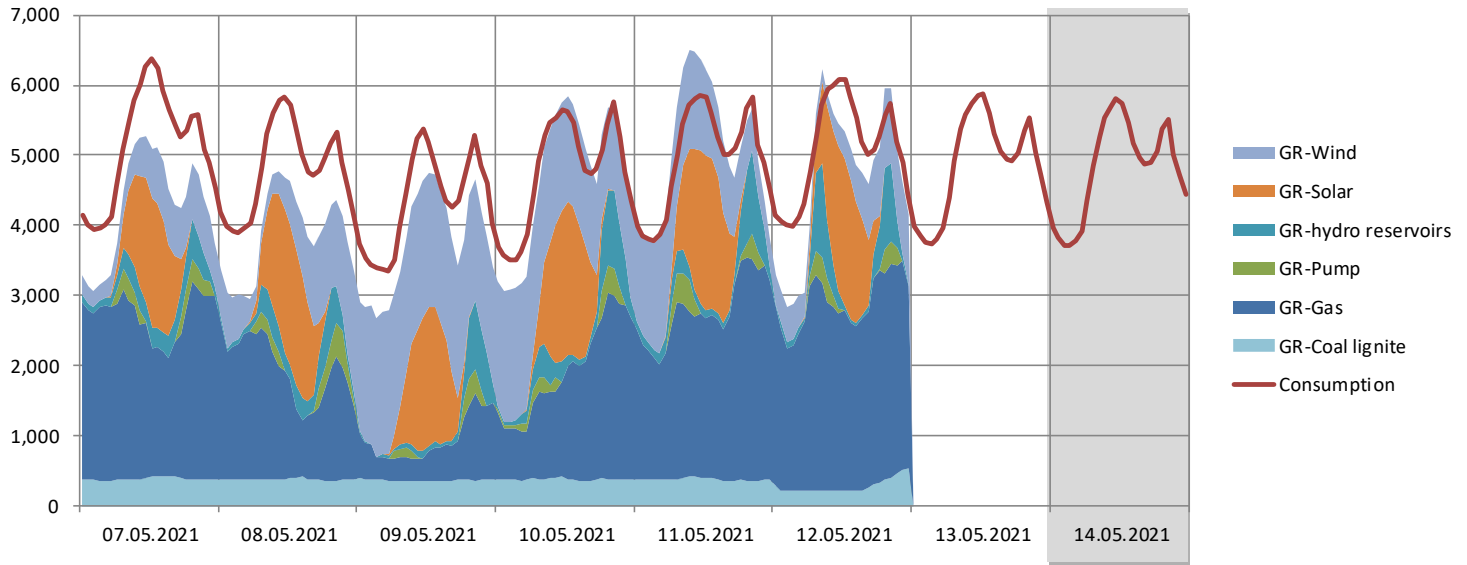
Upcoming transmission grid maintenances affecting Greek import and export NTCs

GR - BG: 17.05.—21.05. (Thessaloniki—Blagoevgrad), NTC 0 MW (MK-GR NTC also affected)

GR - IT: 24.05.—20.06. (Galatina—Arachthos), NTC 0 MW

Power generation, consumption, temperatures

Greece - Power generation and power consumption (MWh)

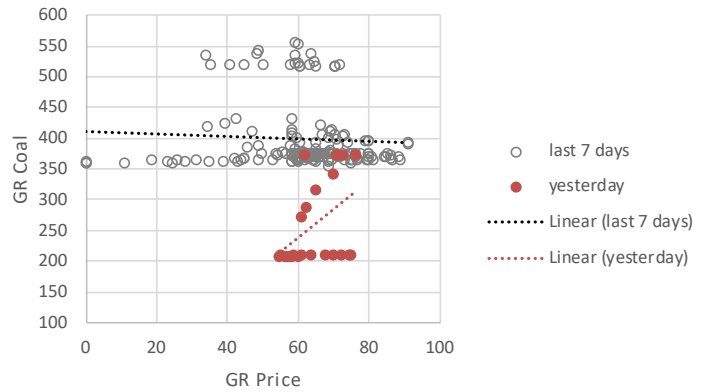


Generation price curves

GR GAS generation



GR COAL generation



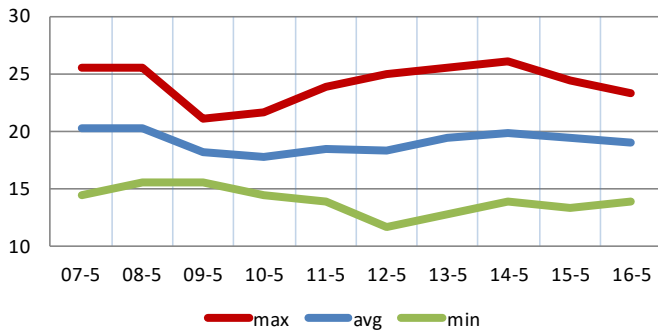
GR HYDRO generation



Temperature forecast

Weighted average temperature

GR - Athens

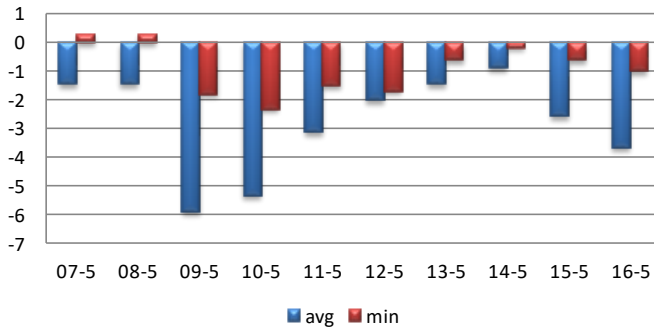


	Greece					
	MAX	AVG	MIN	LT max	LT avg	LT min
07-5	25.6	20.3	14.4	27	20	17
08-5	25.6	20.3	15.6	27	20	17
09-5	21.1	18.2	15.6	27	20	17
10-5	21.7	17.7	14.4	27	20	17
11-5	23.9	18.5	13.9	27	20	17
12-5	25.0	18.3	11.7	27	20	17
13-5	25.6	19.4	12.8	27	20	17
14-5	26.1	19.8	13.9	27	20	17
15-5	24.4	19.4	13.3	27	20	17
16-5	23.3	19.0	13.9	27	20	17

Temperature deviation forecast

Deviation against long term monthly average

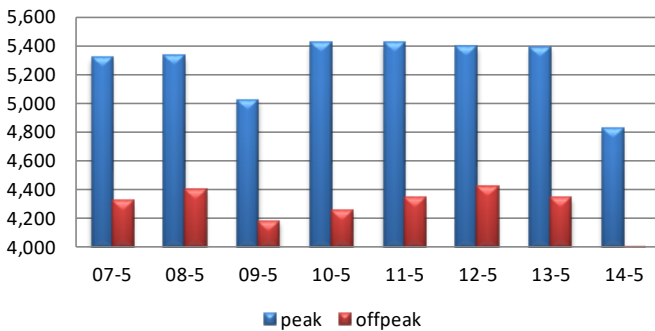
GR - Athens



	Greece temp. dev.	
	MAX	AVG
07-5	-1.4	0.3
08-5	-1.4	0.3
09-5	-5.9	-1.8
10-5	-5.3	-2.3
11-5	-3.1	-1.5
12-5	-2.0	-1.7
13-5	-1.4	-0.6
14-5	-0.9	-0.2
15-5	-2.6	-0.6
16-5	-3.7	-1.0

Consumption forecast, MW average

Greece

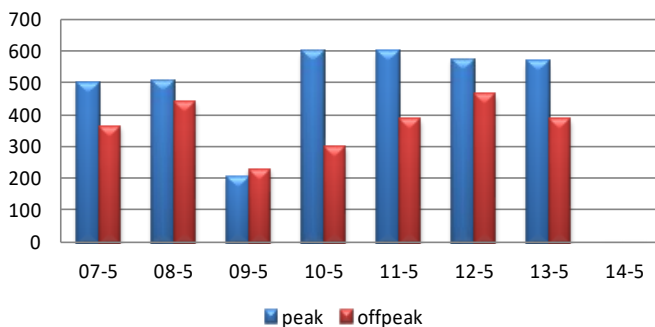


MW	Greece	
	Peak	Offpeak
07-5	5,318	4,317
08-5	5,326	4,394
09-5	5,022	4,181
10-5	5,418	4,254
11-5	5,417	4,340
12-5	5,395	4,418
13-5	5,386	4,341
14-5	4,818	3,954

Consumption forecast change

Consumption changes compared to the day with minimal consumption in last 7 day, MW average

Greece



MW	Greece	
	Peak	Offpeak
07-5	500	363
08-5	508	440
09-5	204	227
10-5	600	300
11-5	599	386
12-5	577	464
13-5	568	387
14-5	0	0