

HENEX Price forecast

Day-ahead price forecast for Greek market



HENEX Forecast for 06.05.2021

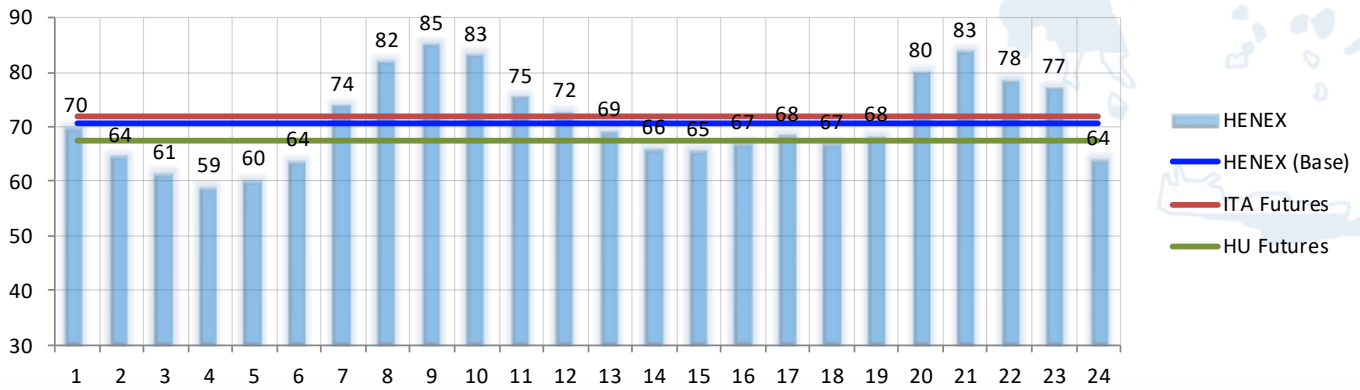
HENEX Base: 70.8 EUR/MWh

HENEX Peak: 72 EUR/MWh

ITA Futures BASE: 72 EUR/MWh

HU Futures BASE: 67.3 EUR/MWh

06.05.2021 - Forecast



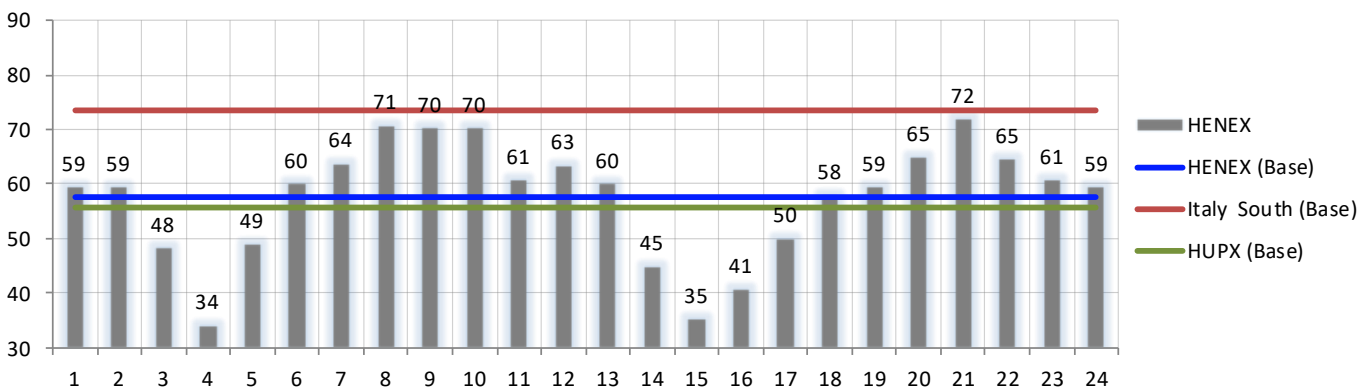
THU 06.05.	BASE	PEAK	1	2	3	4	5	6	7	8	9	10	11	12	13	14	15	16	17	18	19	20	21	22	23	24
GR Price	70.8	72.0	69.7	64.3	61.2	58.7	60.1	63.5	73.6	81.5	84.7	82.7	75.1	72.4	68.9	65.7	65.4	66.6	68.1	66.6	68.0	79.8	83.4	78.2	76.9	63.7

Change compared to previous day (MW, EUR/MW)

Change	BASE	PEAK	1	2	3	4	5	6	7	8	9	10	11	12	13	14	15	16	17	18	19	20	21	22	23	24
Price	13.3	15.5	10.3	4.9	12.9	24.6	11.1	3.5	9.9	10.8	14.4	12.4	14.4	9.0	8.9	20.7	30.1	25.8	18.1	8.5	8.6	14.8	11.5	13.7	16.1	4.3
Load	-41	-36	-41	-21	-32	-31	-36	-56	-87	-68	-41	-2	-10	-6	-21	-68	-74	-59	-48	-17	-35	-51	-72	-57	-52	-11
RES	456	488	371	413	445	468	483	491	520	537	570	589	596	592	577	568	527	445	425	337	317	312	315	325	342	368
GR > IT	0	0	0	0	0	0	0	0	0	0	0	0	0	0	0	0	0	0	0	0	0	0	0	0	0	0
IT > GR	0	0	0	0	0	0	0	0	0	0	0	0	0	0	0	0	0	0	0	0	0	0	0	0	0	0
North > GR	0	0	0	0	0	0	0	0	0	0	0	0	0	0	0	0	0	0	0	0	0	0	0	0	0	0
GR > North	0	0	0	0	0	0	0	0	0	0	0	0	0	0	0	0	0	0	0	0	0	0	0	0	0	0

Previous day HENEX settlement and spreads (EUR/MW)

05.05.2021 - SPOT Settlement

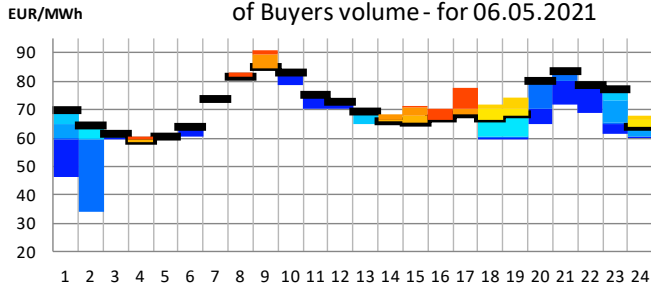


WED 05.05.	BASE	PEAK	1	2	3	4	5	6	7	8	9	10	11	12	13	14	15	16	17	18	19	20	21	22	23	24
GR Price	57.5	56.5	59.4	59.4	48.2	34.1	49.0	60.0	63.8	70.7	70.3	70.3	60.7	63.5	60.0	45.0	35.2	40.8	50.1	58.1	59.4	65.0	71.9	64.5	60.7	59.4
GR-HUPX	1.7	-2.4	26.6	23.3	13.5	-2.0	8.0	11.1	-1.8	-0.4	0.3	5.2	0.3	7.5	4.7	-8.0	-15.9	-12.0	-8.3	-0.5	-0.6	-1.0	-2.0	-4.0	-4.6	1.2
GR-IBEX	5.5	5.6	15.8	8.6	-2.6	-16.7	-1.8	16.4	12.1	6.8	9.4	19.1	9.7	12.5	14.5	-0.3	-10.0	-5.2	4.0	6.6	4.7	2.6	9.4	2.1	6.0	8.5
GR-IT South	-16.1	-13.8	-23.0	-18.0	-27.8	-33.1	-18.2	-7.2	-16.2	-19.3	-24.0	-13.8	-20.6	-12.3	-8.4	-18.0	-19.4	-9.2	0.0	-11.2	-13.0	-16.1	-10.1	-16.9	-18.3	-13.4
GR-PUN	-15.3	-16.9	-11.4	-8.6	-19.1	-25.6	-10.7	-3.8	-11.0	-15.3	-24.0	-13.8	-20.6	-12.3	-8.4	-19.2	-28.5	-22.4	-13.2	-11.2	-13.0	-16.1	-10.1	-16.9	-18.3	-13.4

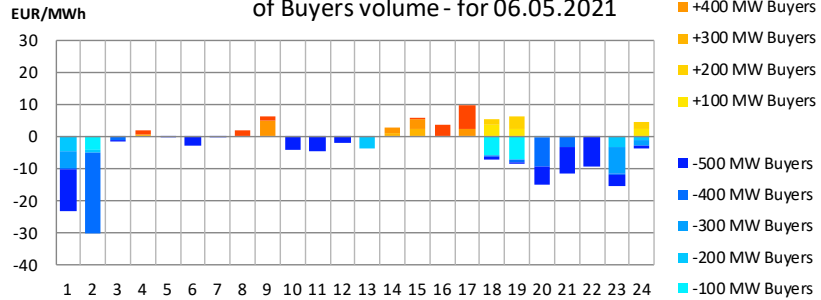
Forecasted HENEX sensitivity (D+1)

Potential change of HENEX price in case of

HENEX hourly price change In case of increase/decrease of Buyers volume - for 06.05.2021



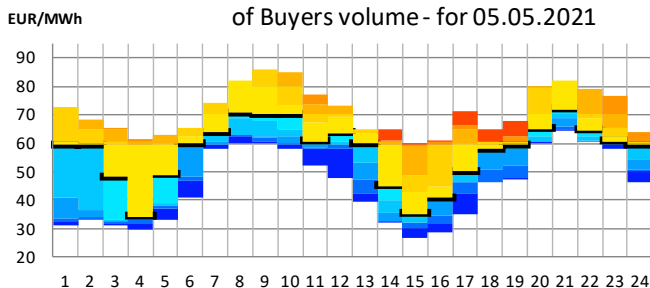
HENEX relative price change in case of increase/decrease of Buyers volume - for 06.05.2021



SELL	-500 MW	-400 MW	-300 MW	-200 MW	-100 MW	HENEX FORECAST	+100 MW	+200 MW	+300 MW	+400 MW	+500 MW
1	46.3	59.4	60.0	64.9	69.7	69.7	69.7	69.7	69.7	69.7	69.7
2	34.1	34.1	59.4	59.4	60.0	64.3	64.3	64.3	64.3	64.3	64.3
3	59.4	60.0	61.2	61.2	61.2	61.2	61.2	61.2	61.2	61.2	61.2
4	58.7	58.7	58.7	58.7	58.7	58.7	58.7	58.7	59.4	59.4	60.7
5	60.0	60.1	60.1	60.1	60.1	60.1	60.1	60.1	60.1	60.1	60.1
6	60.7	63.5	63.5	63.5	63.5	63.5	63.5	63.5	63.5	63.5	63.5
7	73.5	73.6	73.6	73.6	73.6	73.6	73.6	73.6	73.6	73.6	73.6
8	81.5	81.5	81.5	81.5	81.5	81.5	81.5	81.5	81.5	81.5	83.2
9	84.7	84.7	84.7	84.7	84.7	84.7	84.7	84.7	84.7	89.5	91.0
10	78.6	82.7	82.7	82.7	82.7	82.7	82.7	82.7	82.7	82.7	82.7
11	70.3	75.1	75.1	75.1	75.1	75.1	75.1	75.1	75.1	75.1	75.1
12	70.3	72.4	72.4	72.4	72.4	72.4	72.4	72.4	72.4	72.4	72.4
13	65.1	65.1	65.1	65.1	68.9	68.9	68.9	68.9	68.9	68.9	68.9
14	65.7	65.7	65.7	65.7	65.7	65.7	65.7	65.7	66.5	68.6	68.6
15	65.4	65.4	65.4	65.4	65.4	65.4	65.4	65.4	67.7	70.6	70.9
16	66.6	66.6	66.6	66.6	66.6	66.6	66.6	66.6	66.6	66.6	70.3
17	68.1	68.1	68.1	68.1	68.1	68.1	68.1	68.1	68.1	70.3	77.8
18	59.4	60.0	60.7	60.7	60.7	66.6	70.3	71.8	71.8	71.8	71.8
19	59.4	60.0	60.7	60.7	60.7	68.0	70.3	74.2	74.2	74.2	74.2
20	65.0	70.3	79.5	79.8	79.8	79.8	79.8	79.8	79.8	79.8	79.8
21	71.9	80.0	83.4	83.4	83.4	83.4	83.4	83.4	83.4	83.4	83.4
22	68.9	78.2	78.2	78.2	78.2	78.2	78.2	78.2	78.2	78.2	78.2
23	61.3	64.9	65.3	73.4	76.9	76.9	76.9	76.9	76.9	76.9	76.9
24	60.0	60.7	60.7	62.5	63.7	63.7	66.2	68.1	68.1	68.1	68.1

HENEX sensitivity for D

HENEX hourly price change In case of increase/decrease of Buyers volume - for 05.05.2021



HENEX relative price change in case of increase/decrease of Buyers volume - for 05.05.2021

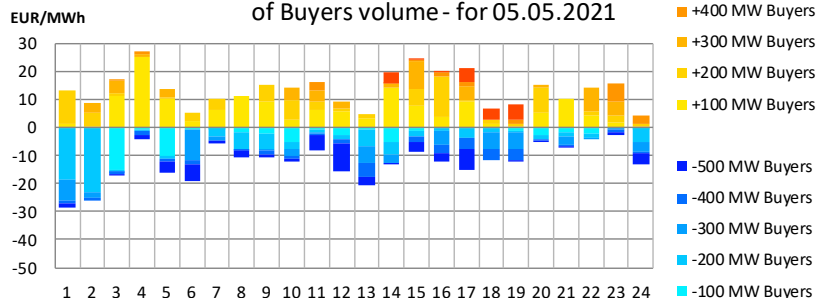
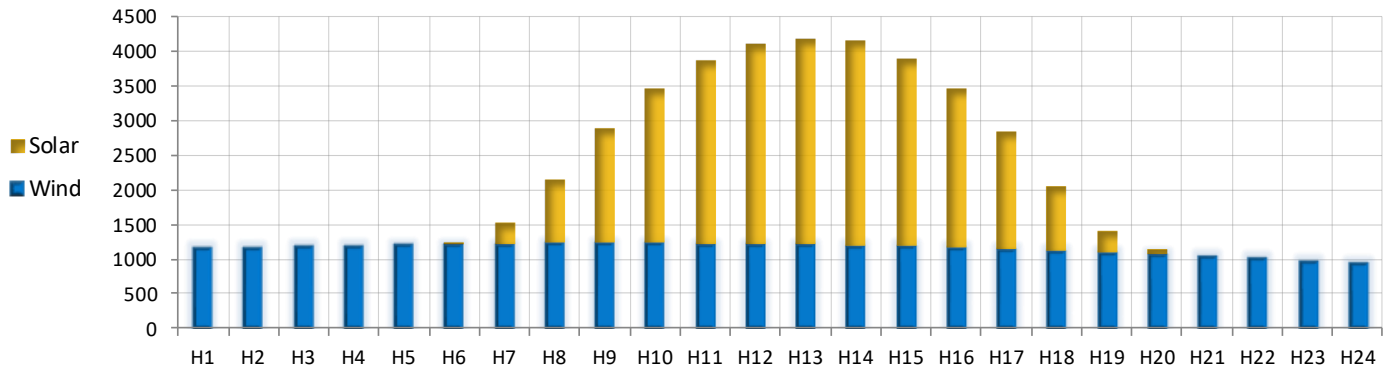


Table of HENEX sensitivity for D available in excel data file

Renewable generation forecast

Greek RES generation forecast

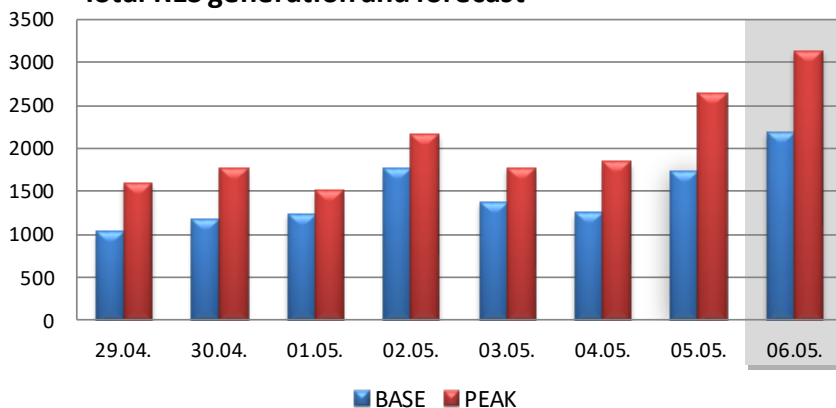


Wind	BASE	PEAK	1	2	3	4	5	6	7	8	9	10	11	12	13	14	15	16	17	18	19	20	21	22	23	24
THU 06.05. (D+1)	1154	1175	1159	1176	1191	1203	1213	1221	1226	1229	1229	1228	1223	1217	1208	1196	1182	1166	1147	1126	1102	1076	1047	1015	981	945
WED 05.05.	754	790	788	763	745	735	730	731	735	743	753	765	777	789	800	808	813	815	811	802	787	763	732	690	639	577
TUE 04.05.	607	618	645	768	742	759	836	828	950	943	869	918	766	601	515	518	620	753	716	504	350	282	219	177	135	147
MON 03.05.	735	545	1045	1025	992	1086	1074	1111	1208	1052	807	619	519	505	561	529	545	554	479	459	461	498	482	643	714	678
SUN 02.05.	1144	995	1573	1502	1504	1478	1538	1523	1416	1319	1238	1011	871	869	875	937	970	1107	1081	1041	1009	936	864	901	933	955
SAT 01.05.	678	440	804	690	632	580	621	615	466	358	346	388	349	297	283	301	291	277	318	556	756	1120	1418	1527	1628	1646
FRI 30.04.	487	456	241	300	384	401	379	350	307	271	193	183	229	241	277	342	448	602	637	663	769	888	945	895	867	877
THU 29.04.	382	372	750	642	524	398	303	230	147	92	81	85	103	111	137	208	305	487	732	806	780	624	565	475	329	253

Solar	BASE	PEAK	1	2	3	4	5	6	7	8	9	10	11	12	13	14	15	16	17	18	19	20	21	22	23	24
THU 06.05. (D+1)	1027	1950	0	0	0	0	0	28	301	911	1656	2235	2649	2897	2980	2963	2719	2288	1705	932	313	64	0	0	0	0
WED 05.05.	972	1847	0	0	0	0	0	26	272	859	1562	2108	2499	2733	2811	2783	2561	2194	1616	919	311	64	0	0	0	0
TUE 04.05.	635	1214	0	0	0	0	0	9	151	511	1002	1409	1709	1905	1963	1893	1705	1387	963	497	131	0	0	0	0	0
MON 03.05.	640	1217	0	0	0	0	0	7	168	595	1104	1541	1838	2004	2028	1907	1636	1245	803	390	102	0	0	0	0	0
SUN 02.05.	612	1163	0	0	0	0	0	6	162	561	1017	1407	1684	1855	1847	1764	1577	1289	911	480	127	0	0	0	0	0
SAT 01.05.	554	1060	0	0	0	0	0	6	138	445	815	1155	1427	1627	1780	1722	1538	1238	851	442	118	3	0	0	0	0
FRI 30.04.	685	1307	0	0	0	0	0	5	162	592	1115	1579	1901	2091	2128	2031	1794	1435	980	498	128	0	0	0	0	0
THU 29.04.	640	1218	0	0	0	0	0	5	158	580	1096	1544	1838	1986	2017	1890	1619	1249	838	430	113	0	0	0	0	0

RES total	BASE	PEAK	1	2	3	4	5	6	7	8	9	10	11	12	13	14	15	16	17	18	19	20	21	22	23	24
THU 06.05. (D+1)	2181	3125	1159	1176	1191	1203	1213	1248	1527	2139	2885	3463	3872	4114	4188	4160	3901	3454	2852	2058	1415	1140	1047	1015	981	945
WED 05.05.	1725	2637	788	763	745	735	730	757	1007	1602	2315	2873	3276	3522	3611	3591	3375	3009	2428	1721	1098	827	732	690	639	577
TUE 04.05.	1376	1761	1045	1025	992	1086	1074	1118	1376	1647	1911	2160	2357	2509	2589	2436	2181	1799	1282	849	563	498	482	643	714	678
MON 03.05.	1756	2159	1573	1502	1504	1478	1538	1529	1578	1880	2255	2418	2555	2724	2722	2701	2547	2396	1992	1521	1136	936	864	901	933	955
SUN 02.05.	1232	1500	804	690	632	580	621	621	604	803	1161	1543	1776	1924	2063	2023	1829	1515	1169	998	874	1123	1418	1527	1628	1646
SAT 01.05.	1172	1763	241	300	384	401	379	355	469	863	1308	1762	2130	2332	2405	2373	2242	2037	1617	1161	897	888	945	895	867	877
FRI 30.04.	1022	1590	750	642	524	398	303	235	305	672	1177	1629	1941	2097	2154	2098	1924	1736	1570	1236	893	624	565	475	329	253
THU 29.04.	1022	1590	750	642	524	398	303	235	305	672	1177	1629	1941	2097	2154	2098	1924	1736	1570	1236	893	624	565	475	329	253

Total RES generation and forecast

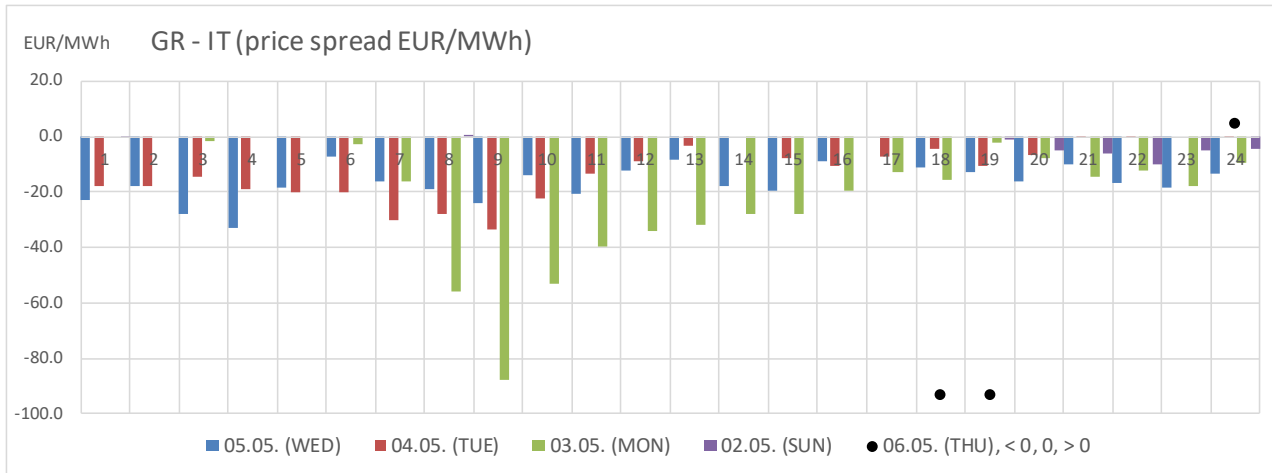


Base	Wind	Solar	Total
29.04.	372	1,218	1,590
30.04.	456	1,307	1,763
01.05.	440	1,060	1,500
02.05.	995	1,163	2,159
03.05.	545	1,217	1,761
04.05.	618	1,214	1,831
05.05.	790	1,847	2,637
06.05.	1,175	1,950	3,125

GR-IT South price spread forecast and history

GR - IT South	BASE	PEAK	1	2	3	4	5	6	7	8	9	10	11	12	13	14	15	16	17	18	19	20	21	22	23	24	
THU 06.05.			0	0	0	0	0	0	0	0	0	0	0	0	0	0	0	0	0	0	<0	<0	0	0	0	0	<0
WED 05.05.	-16.1	-13.5	-23.0	-18.0	-27.8	-33.1	-18.2	-7.2	-16.2	-19.3	-24.0	-13.8	-20.6	-12.3	-8.4	-18.0	-19.4	-9.2	0.0	-11.2	-13.0	-16.1	-10.1	-16.9	-18.3	-13.4	
TUE 04.05.	-12.5	-10.0	-18.1	-17.9	-14.8	-19.2	-19.9	-19.9	-30.2	-27.9	-33.3	-22.4	-13.4	-9.2	-3.6	0.0	-7.7	-10.7	-7.3	-4.4	-10.7	-6.9	-0.6	-0.4	0.0	-0.5	
MON 03.05.	-20.4	-28.9	0.0	0.0	-1.6	0.0	0.0	-2.7	-16.1	-55.9	-87.9	-53.2	-39.5	-34.3	-31.8	-28.0	-28.0	-19.4	-12.8	-15.6	-2.5	-7.6	-14.8	-12.0	-17.6	-9.5	
SUN 02.05.	-1.3	-0.9	-0.1	0.0	0.0	0.0	0.0	0.0	0.0	0.0	0.0	0.0	0.0	0.0	0.0	0.0	0.0	0.0	0.0	0.0	-1.0	-4.7	-6.3	-10.1	-5.0	-4.5	
SAT 01.05.	-0.6	-0.3	-5.0	-4.3	-1.2	0.0	0.0	0.0	0.0	0.0	0.0	0.0	0.0	0.0	0.0	0.0	0.0	0.0	0.0	0.0	0.0	0.0	0.0	0.0	0.0	0.0	
FRI 30.04.	-9.3	-12.2	-3.7	-3.6	-3.2	-2.4	-1.1	-5.4	-8.9	-27.6	-34.0	-31.3	-16.2	-12.1	-11.3	-7.2	-3.7	-12.4	-5.0	0.0	0.0	-13.0	-11.9	-7.4	-0.2	-2.8	
THU 29.04.	-6.8	-8.9	-14.0	-9.2	-6.4	-3.9	-1.5	-5.0	0.0	-3.5	-10.3	-9.5	-11.6	-13.4	-8.2	-11.6	-11.9	-8.7	-11.0	-6.8	0.0	-7.7	-4.5	-0.2	0.0	-4.7	

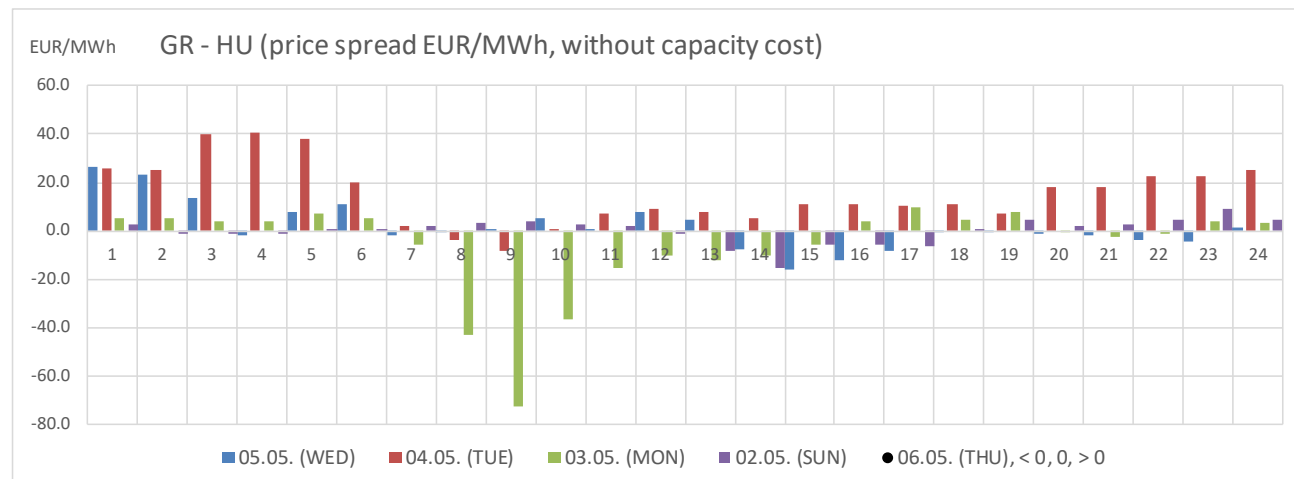
- Greek market is decoupled from Italy and above Italy (red color, >0)
- Greek market is decoupled from Italy and below Italy (green color, <0)



GR-HU price spread forecast and history

GR - HUPX	BASE	PEAK	1	2	3	4	5	6	7	8	9	10	11	12	13	14	15	16	17	18	19	20	21	22	23	24
THU 06.05.			0	0	5	0	5	0	0	0	0	0	0	0	0	5	5	5	5	0	0	0	0	0	0	0
WED 05.05.	1.7	-2.3	26.6	23.3	13.5	-2.0	8.0	11.1	-1.8	-0.4	0.3	5.2	0.3	7.5	4.7	-8.0	-15.9	-12.0	-8.3	-0.5	-0.6	-1.0	-2.0	-4.0	-4.6	1.2
TUE 04.05.	15.3	8.4	26.0	25.2	40.2	40.8	38.0	20.1	1.7	-3.9	-8.1	0.6	7.3	9.1	7.7	5.0	11.3	11.2	10.6	11.0	7.0	18.3	18.0	22.8	22.9	25.0
MON 03.05.	-6.3	-10.7	5.5	5.1	4.0	3.9	7.1	5.0	-5.8	-42.9	-72.5	-36.5	-15.4	-10.1	-12.5	-10.5	-6.0	4.0	9.8	4.8	8.0	-0.1	-2.2	-1.0	4.0	3.5
SUN 02.05.	-0.1	-1.9	2.4	-1.1	-1.3	-1.3	0.1	0.9	2.1	3.0	4.0	2.5	1.8	-1.5	-8.1	-15.6	-5.8	-5.6	-6.2	0.6	4.6	2.0	2.8	4.3	9.0	4.3
SAT 01.05.	-2.5	-2.2	-2.8	-4.1	-3.2	0.0	0.9	-0.3	-6.4	-6.5	-5.7	-4.8	1.1	0.3	-0.9	0.0	1.1	-0.1	0.8	-3.0	-6.0	-6.5	-4.4	-4.5	-5.0	-1.1
FRI 30.04.	-6.9	-11.8	8.9	7.8	4.0	2.6	2.9	1.2	-5.4	-28.0	-34.6	-24.3	-17.6	-15.8	-10.5	-7.5	-5.2	-5.6	1.0	0.7	-0.5	-17.6	-16.0	-7.7	2.8	-0.4
THU 29.04.	0.8	0.3	-3.5	-1.7	-0.6	0.6	3.5	1.3	3.0	-3.8	-8.9	-2.0	0.9	-1.5	1.4	0.3	1.8	0.2	2.6	4.3	8.8	-3.7	0.1	6.9	5.2	4.3

- D+1 : forecasted HENEX hourly price - Forecasted HUPX hourly price
- Greek market is above HUPX (red color, >0)
- Greek market is below HUPX (green color, <0)



GR-HU cross border arbitration opportunities

GR-HUPX	BASE	PEAK	1	2	3	4	5	6	7	8	9	10	11	12	13	14	15	16	17	18	19	20	21	22	23	24
THU 06.05. Opportunity:					Green			Green								Green										
WED 05.05.	4.7	-0.3	33.1	29.7	19.9	2.1	12.1	15.2	0.3	1.9	2.6	7.5	2.6	9.8	7.0	-6.2	-14.1	-10.8	-7.1	0.8	1.4	1.0	1.9	-2.0	-2.5	7.3
TUE 04.05.	16.3	8.9	27.3	26.5	41.4	42.0	38.9	21.0	2.1	-3.6	-7.8	1.0	7.6	9.4	8.1	5.4	11.6	11.5	11.0	11.5	7.5	19.1	19.5	24.4	26.5	28.6
MON 03.05.	-6.3	-10.7	5.5	5.1	4.0	4.0	7.2	5.0	-5.8	-42.9	-72.5	-36.5	-15.4	-10.1	-12.5	-10.5	-6.0	4.0	9.8	4.8	8.0	-0.1	-2.2	-1.0	4.0	3.5
SUN 02.05.	0.0	-1.8	2.5	-0.9	-1.1	-1.1	0.3	1.0	2.2	3.0	4.0	2.6	1.8	-1.5	-8.1	-15.5	-5.8	-5.6	-6.1	0.6	4.6	2.0	2.9	4.3	9.1	4.4
SAT 01.05.	-2.3	-2.0	-2.1	-3.5	-2.6	0.7	1.5	0.0	-6.3	-6.4	-5.6	-4.7	1.2	0.5	-0.8	0.1	1.2	0.0	1.0	-2.8	-5.8	-6.4	-4.3	-4.4	-4.7	-0.9
FRI 30.04.	-6.4	-11.6	9.8	8.6	4.9	3.5	3.8	2.0	-4.9	-27.9	-34.4	-24.1	-17.4	-15.5	-10.3	-7.3	-5.0	-5.5	1.4	1.0	-0.2	-17.4	-15.7	-7.3	3.6	0.0
THU 29.04.	1.8	0.8	-1.6	0.2	1.4	2.6	5.5	3.3	3.6	-3.4	-8.5	-1.5	1.5	-0.9	2.0	0.7	2.2	0.7	2.9	4.8	9.3	-3.2	0.6	7.8	6.8	5.9

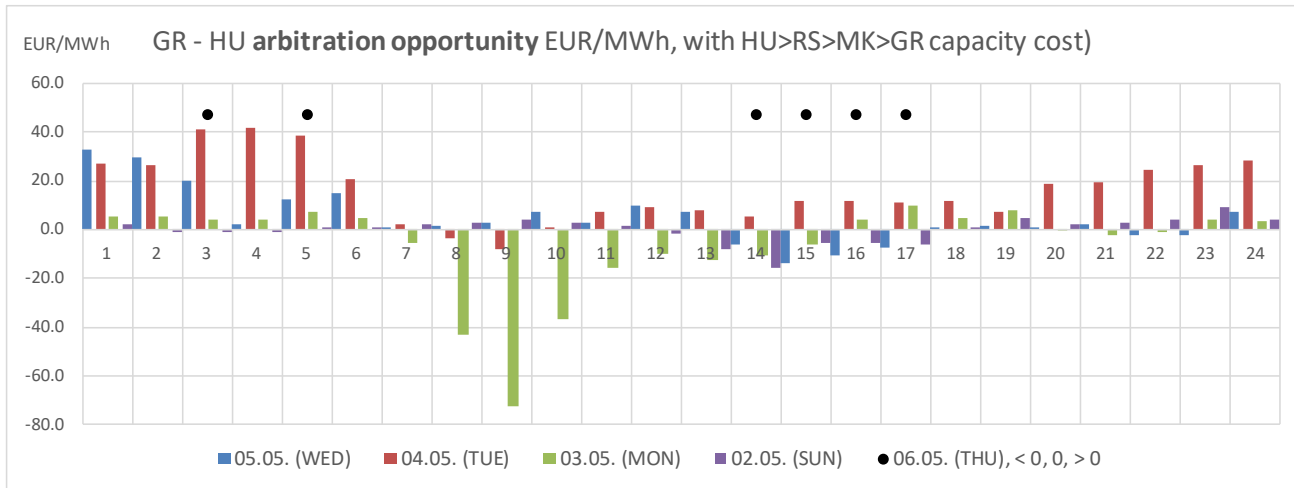
Green: High arbitration opportunity **forecast:** Deliver from HUPX to HENEX

Red: High arbitration opportunity **forecast:** Deliver HENEX to HUPX

History: Physical delivery from HUPX to HENEX with price of daily auctions HU>RS + RS>MK + MK>GR included

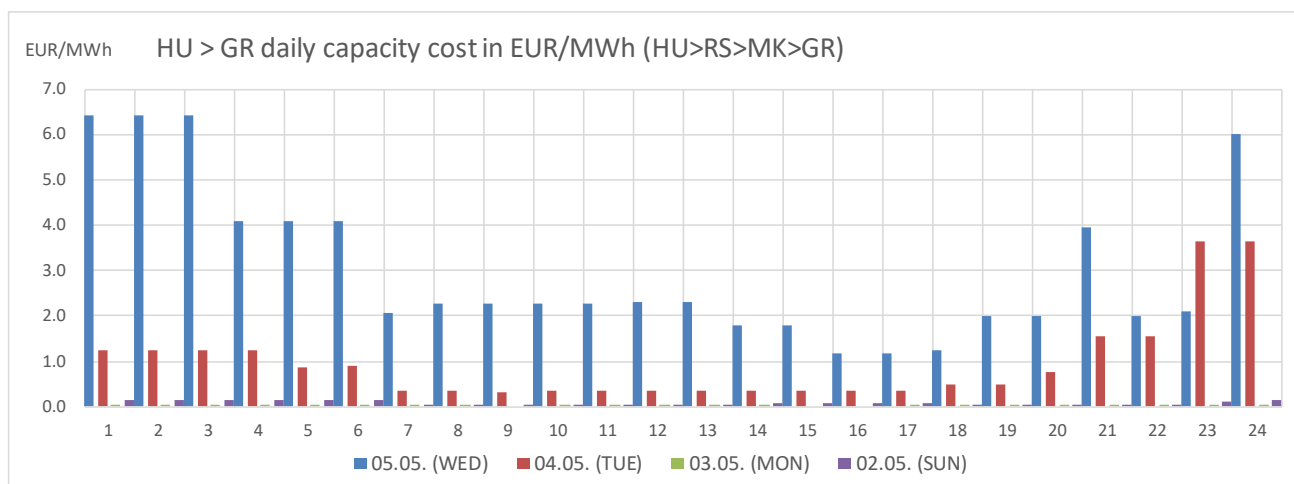
- Greek market is above HUPX (red color, >0)

- Greek market is below HUPX (green color, <0)



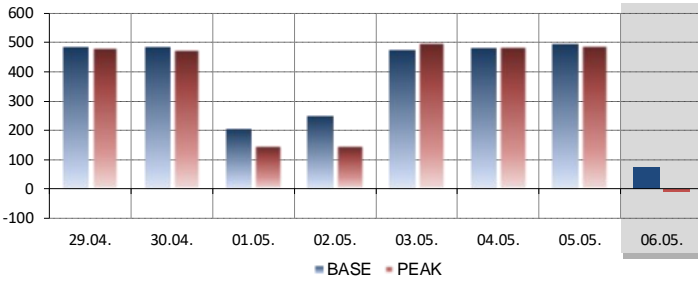
Daily capacity rent price (HU>RS>MK>GR)

HUPX > GR	BASE	PEAK	1	2	3	4	5	6	7	8	9	10	11	12	13	14	15	16	17	18	19	20	21	22	23	24
05.05.	3.0	2.0	6.4	6.4	6.4	4.1	4.1	4.1	2.1	2.3	2.3	2.3	2.3	2.3	2.3	1.8	1.8	1.2	1.2	1.3	2.0	2.0	4.0	2.0	2.1	6.0
04.05.	0.9	0.5	1.3	1.3	1.2	1.2	0.9	0.9	0.4	0.4	0.3	0.4	0.4	0.4	0.4	0.4	0.4	0.4	0.4	0.5	0.5	0.8	1.5	1.5	3.7	3.7
03.05.	0.0	0.0	0.0	0.0	0.0	0.0	0.0	0.0	0.0	0.0	0.0	0.0	0.0	0.0	0.0	0.0	0.0	0.0	0.0	0.0	0.0	0.0	0.0	0.0	0.0	0.0
02.05.	0.1	0.0	0.1	0.1	0.1	0.1	0.1	0.1	0.1	0.0	0.0	0.0	0.0	0.0	0.1	0.1	0.1	0.1	0.1	0.1	0.0	0.0	0.0	0.0	0.1	0.1
01.05.	0.3	0.1	0.7	0.6	0.6	0.6	0.6	0.2	0.1	0.1	0.1	0.1	0.1	0.2	0.1	0.1	0.1	0.1	0.1	0.2	0.2	0.2	0.1	0.1	0.1	0.2
30.04.	0.4	0.2	0.9	0.9	0.9	0.9	0.9	0.8	0.4	0.1	0.2	0.2	0.2	0.3	0.2	0.2	0.2	0.2	0.3	0.3	0.3	0.2	0.3	0.5	0.8	0.5
29.04.	1.0	0.5	2.0	1.9	1.9	2.0	2.0	2.0	0.7	0.4	0.4	0.5	0.7	0.7	0.6	0.5	0.5	0.5	0.4	0.5	0.4	0.5	0.5	0.9	1.6	1.6

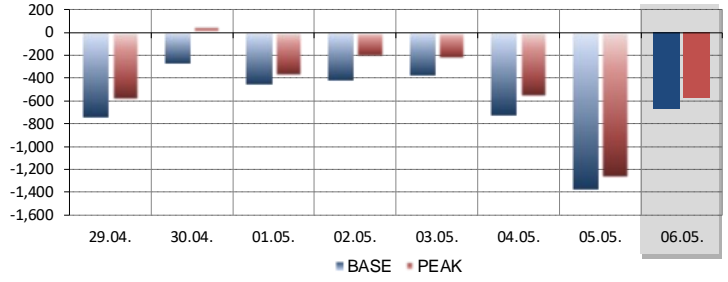


Commercial flows forecast and history

GR > Italy South (MW AVG)



GR > Northern borders (GR> AL+MK+BG+TR, MW AVG)



HENEX > IT South	BASE	PEAK	1	2	3	4	5	6	7	8	9	10	11	12	13	14	15	16	17	18	19	20	21	22	23	24
THU 06.05.																										
WED 05.05.	495	491	500	500	500	500	500	500	500	500	500	500	500	500	500	500	500	500	380	500	500	500	500	500	500	500
TUE 04.05.	485	489	500	500	500	500	500	500	500	500	500	500	500	500	500	352	500	500	500	500	500	500	500	500	285	500
MON 03.05.	474	500	130	342	500	425	489	500	500	500	500	500	500	500	500	500	500	500	500	500	500	500	500	500	500	500
SUN 02.05.	251	176	500	236	199	218	316	275	160	323	332	198	86	-293	-155	-217	257	264	-29	350	500	500	500	500	500	500
SAT 01.05.	207	150	500	500	500	446	413	399	-15	278	500	328	493	-31	-110	179	374	146	-86	30	-235	228	131	-15	-176	184
FRI 30.04.	487	476	500	500	500	500	500	500	500	500	500	500	500	500	500	500	500	500	500	340	350	500	500	500	500	500
THU 29.04.	486	485	500	500	500	500	500	500	450	500	500	500	500	500	500	500	500	500	500	500	302	500	500	500	415	500

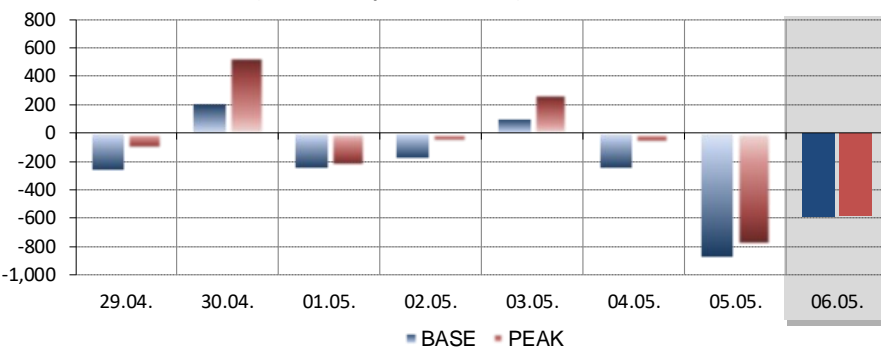
HENEX > North	BASE	PEAK	1	2	3	4	5	6	7	8	9	10	11	12	13	14	15	16	17	18	19	20	21	22	23	24
THU 06.05.*																										
WED 05.05.	-1377	-1292	-1557	-1554	-1545	-1488	-1537	-1524	-1426	-1298	-1317	-1295	-1343	-1374	-1358	-1185	-1013	-1088	-1118	-1352	-1411	-1447	-1493	-1395	-1366	-1564
TUE 04.05.	-732	-588	-986	-980	-984	-984	-994	-926	-627	-359	-333	-290	-359	-469	-400	-344	-501	-632	-639	-800	-837	-1045	-995	-1045	-992	-1044
MON 03.05.	-374	-236	-487	-553	-531	-496	-648	-639	-543	-44	186	15	-68	-67	-126	-40	-72	-354	-588	-568	-618	-382	-385	-588	-704	-687
SUN 02.05.	-423	-228	-674	-599	-618	-603	-729	-733	-633	-588	-555	-548	-435	-274	-120	509	172	90	97	-370	-664	-400	-460	-508	-789	-730
SAT 01.05.	-454	-380	-517	-569	-545	-675	-710	-810	-506	-220	-260	-288	-444	-361	-365	-224	-354	-369	-543	-517	-503	-322	-396	-331	-413	-647
FRI 30.04.	-275	44	-1000	-1026	-880	-819	-742	-713	-432	-257	-191	0	116	125	201	221	277	225	43	-15	-249	-81	-97	-343	-513	-451
THU 29.04.	-750	-604	-717	-947	-1011	-1117	-1142	-1082	-897	-350	-297	-557	-529	-582	-574	-366	-390	-411	-661	-940	-998	-727	-820	-1012	-991	-883

*: Forecast of commercial flows on GR>AL, GR>MK, GR>BG and GR>TR borders

- Green: Greece exporting from Italy / North borders
- Red: Greece importing to Italy / North borders

GR NET Position	BASE	PEAK	1	2	3	4	5	6	7	8	9	10	11	12	13	14	15	16	17	18	19	20	21	22	23	24
THU 06.05.																										
WED 05.05.	-882	-801	-1057	-1054	-1045	-988	-1037	-1024	-926	-798	-817	-795	-843	-874	-858	-685	-513	-588	-738	-852	-911	-947	-993	-895	-866	-1064
TUE 04.05.	-247	-99	-486	-480	-484	-484	-494	-426	-127	141	167	210	141	31	100	8	-1	-132	-139	-300	-337	-545	-495	-545	-707	-544
MON 03.05.	100	264	-357	-211	-31	-71	-159	-139	-43	456	686	515	432	433	374	460	428	146	-88	-68	-118	118	115	-88	-204	-187
SUN 02.05.	-173	-51	-174	-363	-419	-385	-413	-458	-473	-265	-223	-350	-349	-567	-275	292	429	354	68	-20	-164	100	40	-8	-289	-230
SAT 01.05.	-247	-231	-17	-69	-45	-229	-297	-411	-521	58	240	40	49	-392	-475	-45	20	-223	-629	-487	-738	-94	-265	-346	-589	-463
FRI 30.04.	212	520	-500	-526	-380	-319	-242	-213	68	243	309	500	616	625	701	721	777	725	543	325	101	419	403	157	-13	49
THU 29.04.	-264	-119	-217	-447	-511	-617	-642	-582	-447	150	203	-57	-29	-82	-74	134	110	89	-161	-440	-696	-227	-320	-512	-576	-383

GR NET POSITION (Total GR export, MW AVG)



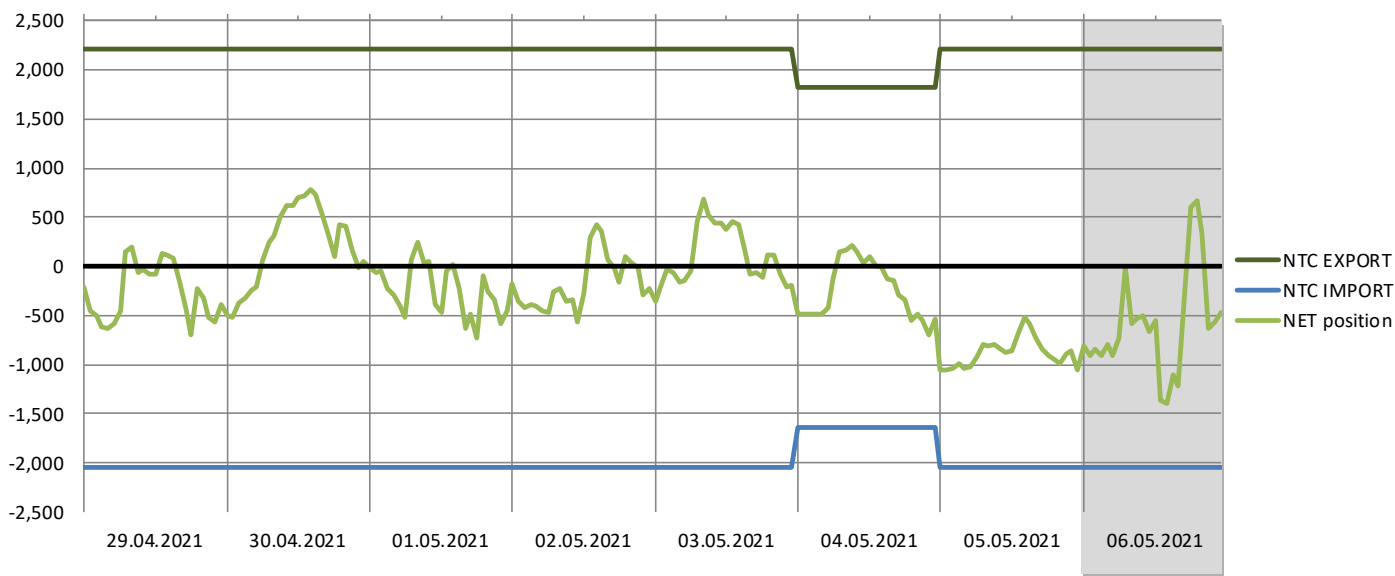
Net transfer capacities

D+1 06.05.	1	2	3	4	5	6	7	8	9	10	11	12	13	14	15	16	17	18	19	20	21	22	23	24
GR > IT	500	500	500	500	500	500	500	500	500	500	500	500	500	500	500	500	500	500	500	500	500	500	500	500
GR > AL	400	400	400	400	400	400	400	400	400	400	400	400	400	400	400	400	400	400	400	400	400	400	400	400
GR > MK	500	500	500	500	500	500	500	500	500	500	500	500	500	500	500	500	500	500	500	500	500	500	500	500
GR > BG	600	600	600	600	600	600	600	600	600	600	600	600	600	600	600	600	600	600	600	600	600	600	600	600
GR > TR	216	216	216	216	216	216	216	216	216	216	216	216	216	216	216	216	216	216	216	216	216	216	216	216
Total	2216	2216	2216	2216	2216	2216	2216	2216	2216	2216	2216	2216	2216	2216	2216	2216	2216	2216	2216	2216	2216	2216	2216	2216
IT > GR	500	500	500	500	500	500	500	500	500	500	500	500	500	500	500	500	500	500	500	500	500	500	500	500
AL > GR	400	400	400	400	400	400	400	400	400	400	400	400	400	400	400	400	400	400	400	400	400	400	400	400
MK > GR	400	400	400	400	400	400	400	400	400	400	400	400	400	400	400	400	400	400	400	400	400	400	400	400
BG > GR	700	700	700	700	700	700	700	700	700	700	700	700	700	700	700	700	700	700	700	700	700	700	700	700
TR > GR	50	50	50	50	50	50	50	50	50	50	50	50	50	50	50	50	50	50	50	50	50	50	50	50
Total	2050	2050	2050	2050	2050	2050	2050	2050	2050	2050	2050	2050	2050	2050	2050	2050	2050	2050	2050	2050	2050	2050	2050	2050

NTC change compared to previous day (MW)

NTC Change	1	2	3	4	5	6	7	8	9	10	11	12	13	14	15	16	17	18	19	20	21	22	23	24
GR > IT	0	0	0	0	0	0	0	0	0	0	0	0	0	0	0	0	0	0	0	0	0	0	0	0
GR > AL	0	0	0	0	0	0	0	0	0	0	0	0	0	0	0	0	0	0	0	0	0	0	0	0
GR > MK	0	0	0	0	0	0	0	0	0	0	0	0	0	0	0	0	0	0	0	0	0	0	0	0
GR > BG	0	0	0	0	0	0	0	0	0	0	0	0	0	0	0	0	0	0	0	0	0	0	0	0
GR > TR	0	0	0	0	0	0	0	0	0	0	0	0	0	0	0	0	0	0	0	0	0	0	0	0
Total	0	0	0	0	0	0	0	0	0	0	0	0	0	0	0	0	0	0	0	0	0	0	0	0
IT > GR	0	0	0	0	0	0	0	0	0	0	0	0	0	0	0	0	0	0	0	0	0	0	0	0
AL > GR	0	0	0	0	0	0	0	0	0	0	0	0	0	0	0	0	0	0	0	0	0	0	0	0
MK > GR	0	0	0	0	0	0	0	0	0	0	0	0	0	0	0	0	0	0	0	0	0	0	0	0
BG > GR	0	0	0	0	0	0	0	0	0	0	0	0	0	0	0	0	0	0	0	0	0	0	0	0
TR > GR	0	0	0	0	0	0	0	0	0	0	0	0	0	0	0	0	0	0	0	0	0	0	0	0
Total	0	0	0	0	0	0	0	0	0	0	0	0	0	0	0	0	0	0	0	0	0	0	0	0

GR NTCs and Net position (history and forecast, MW)



Upcoming transmission grid maintenances affecting Greek import and export NTCs

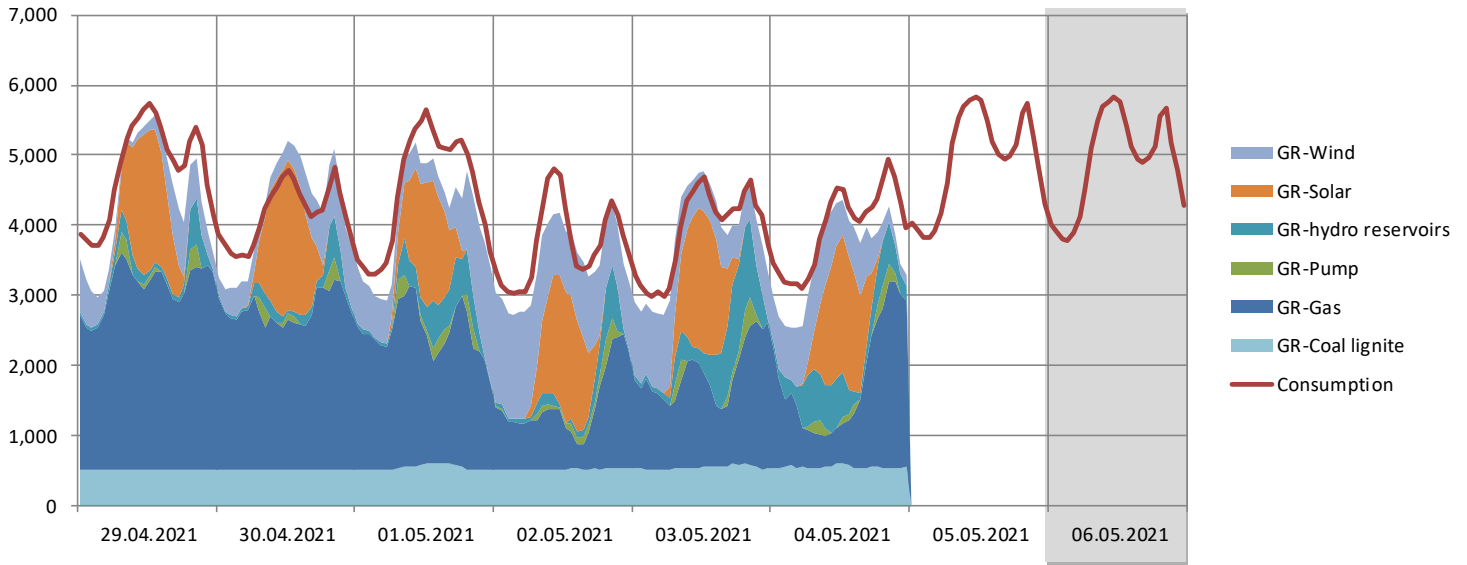
GR- AL: 03.05. - 04.05. (Kardia—Zemblak), NTC 0 MW

GR - BG: 17.05.—21.05. (Thessaloniki—Blagoevgrad), NTC 0 MW (MK-GR NTC also affected)

GR - IT: 24.05.—20.06. (Galatina—Arachthos), NTC 0 MW

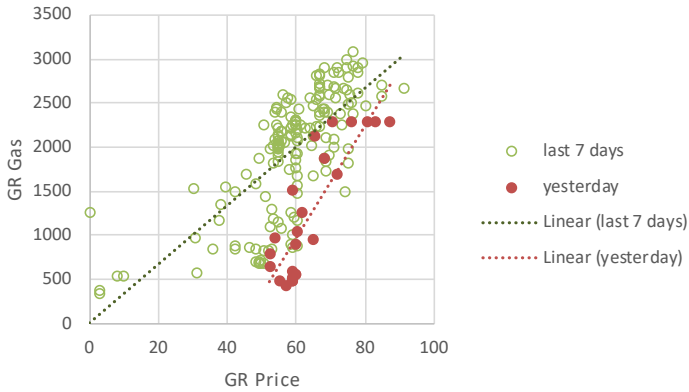
Power generation, consumption, temperatures

Greece - Power generation and power consumption (MWh)

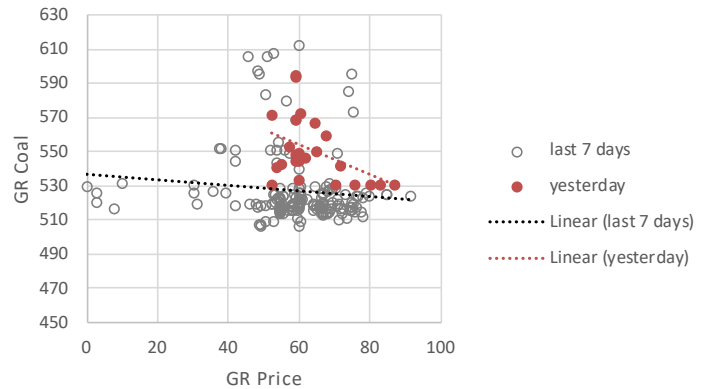


Generation price curves

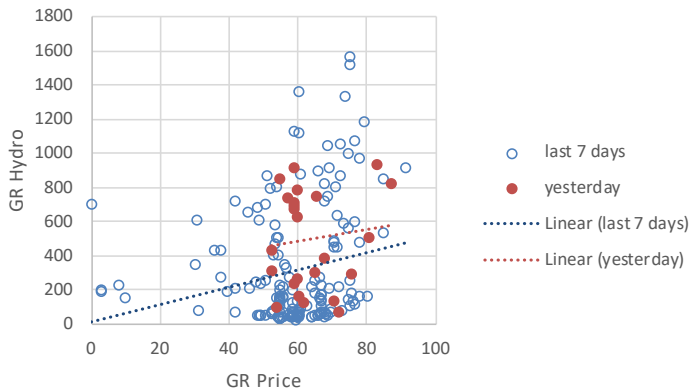
GR GAS generation



GR COAL generation



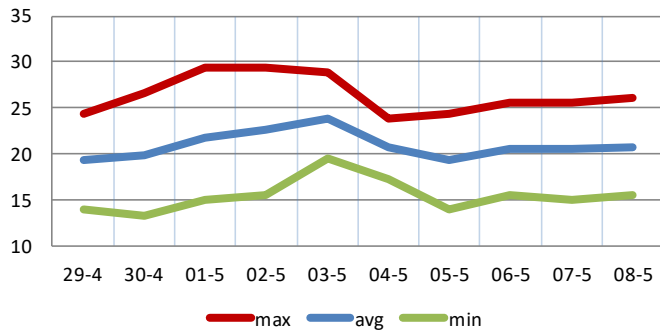
GR HYDRO generation



Temperature forecast

Weighted average temperature

GR - Athens

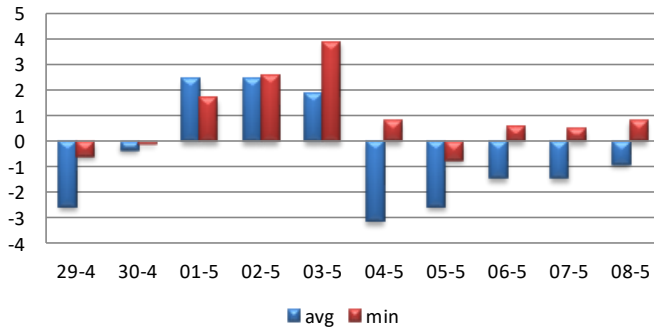


	Greece					
	MAX	AVG	MIN	LT max	LT avg	LT min
29-4	24.4	19.4	13.9	27	20	17
30-4	26.7	19.9	13.3	27	20	17
01-5	29.4	21.7	15.0	27	20	17
02-5	29.4	22.6	15.6	27	20	17
03-5	28.9	23.9	19.4	27	20	17
04-5	23.9	20.8	17.2	27	20	17
05-5	24.4	19.3	13.9	27	20	17
06-5	25.6	20.6	15.6	27	20	17
07-5	25.6	20.5	15.0	27	20	17
08-5	26.1	20.8	15.6	27	20	17

Temperature deviation forecast

Deviation against long term monthly average

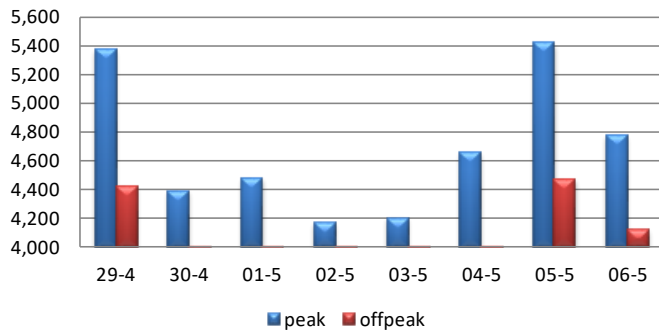
GR - Athens



	Greece temp. dev.	
	MAX	AVG
29-4	-2.6	-0.6
30-4	-0.3	-0.1
01-5	2.4	1.7
02-5	2.4	2.6
03-5	1.9	3.9
04-5	-3.1	0.8
05-5	-2.6	-0.7
06-5	-1.4	0.6
07-5	-1.4	0.5
08-5	-0.9	0.8

Consumption forecast, MW average

Greece

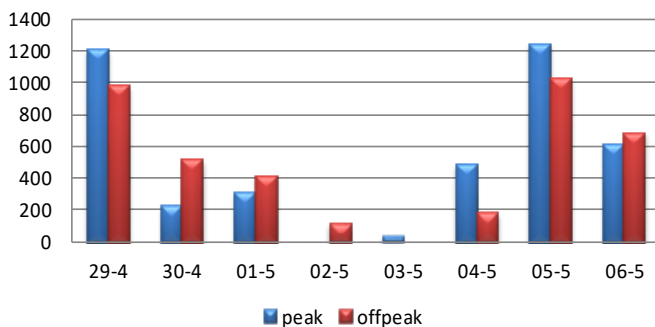


MW	Greece	
	Peak	Offpeak
29-4	5,379	4,420
30-4	4,390	3,952
01-5	4,477	3,852
02-5	4,168	3,549
03-5	4,202	3,437
04-5	4,655	3,618
05-5	5,415	4,467
06-5	4,779	4,120

Consumption forecast change

Consumption changes compared to the day with minimal consumption in last 7 day, MW average

Greece



MW	Greece	
	Peak	Offpeak
29-4	1,211	983
30-4	222	515
01-5	309	415
02-5	0	112
03-5	34	0
04-5	487	181
05-5	1,247	1,030
06-5	611	683