

HENEX Price forecast

Day-ahead price forecast for Greek market



HENEX Forecast for 05.05.2021

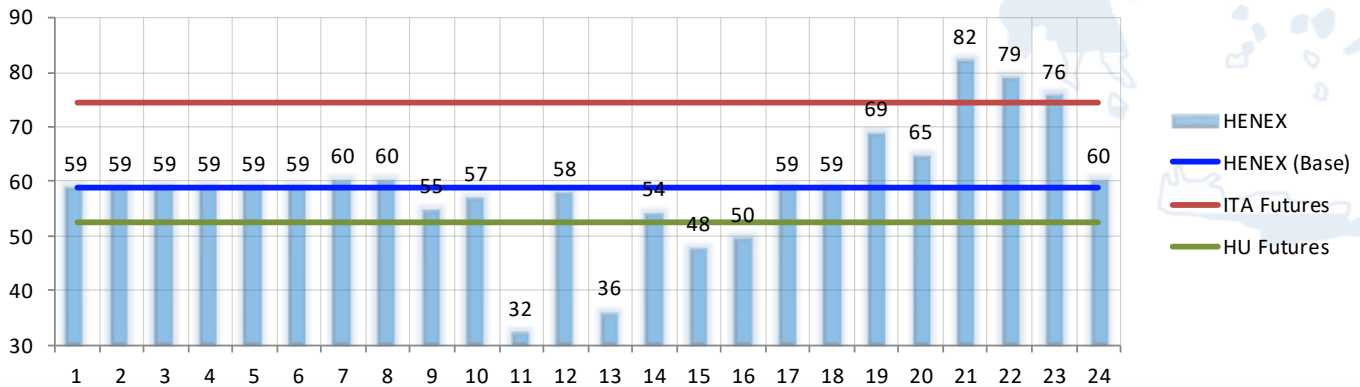
HENEX Base: 59 EUR/MWh

HENEX Peak: 53.6 EUR/MWh

ITA Futures BASE: 74.6 EUR/MWh

HU Futures BASE: 52.5 EUR/MWh

05.05.2021 - Forecast



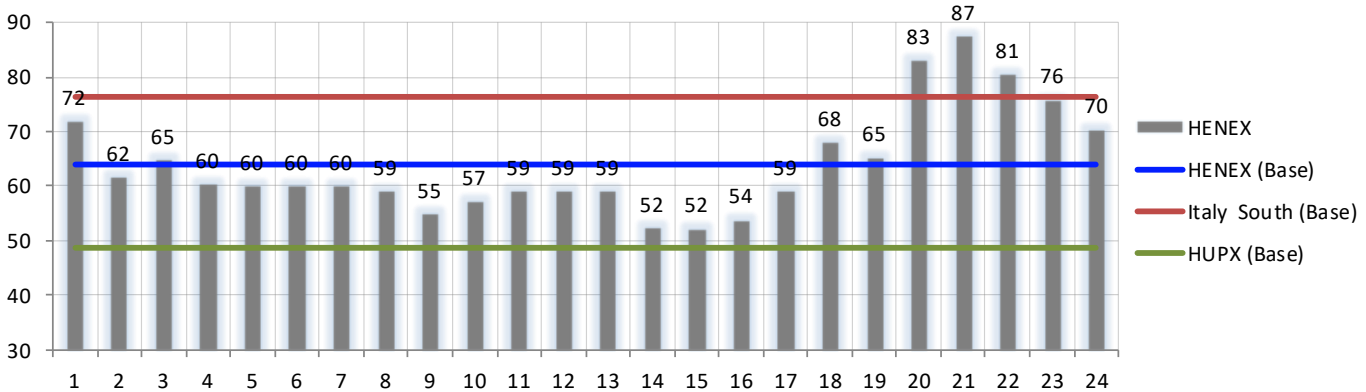
WED 05.05.	BASE	PEAK	1	2	3	4	5	6	7	8	9	10	11	12	13	14	15	16	17	18	19	20	21	22	23	24
GR Price	59.0	53.6	59.1	59.1	59.1	59.1	59.1	59.1	60.4	60.4	55.0	57.3	32.5	58.0	36.3	54.4	48.0	49.8	59.1	59.1	69.0	64.9	82.1	79.1	75.8	60.4

Change compared to previous day (MW, EUR/MW)

Change	BASE	PEAK	1	2	3	4	5	6	7	8	9	10	11	12	13	14	15	16	17	18	19	20	21	22	23	24
Price	-5.0	-6.7	-12.9	-2.7	-5.8	-1.3	-0.9	-0.9	0.4	1.3	0.0	0.0	-26.6	-1.1	-22.8	2.0	-4.3	-4.2	0.0	-8.9	3.7	-18.2	-5.2	-1.5	-0.1	-10.0
Load	41	36	41	21	32	31	36	56	87	68	41	2	10	6	21	68	74	59	48	17	35	51	72	57	52	11
RES	-17	114	28	-5	-39	-74	-110	-133	-69	-32	87	173	228	251	233	383	333	231	91	-85	-217	-345	-385	-358	-322	-278
NTC																										
GR > IT	0	0	0	0	0	0	0	0	0	0	0	0	0	0	0	0	0	0	0	0	0	0	0	0	0	0
IT > GR	0	0	0	0	0	0	0	0	0	0	0	0	0	0	0	0	0	0	0	0	0	0	0	0	0	0
North > GR	0	0	0	0	0	0	0	0	0	0	0	0	0	0	0	0	0	0	0	0	0	0	0	0	0	0
GR > North	0	0	0	0	0	0	0	0	0	0	0	0	0	0	0	0	0	0	0	0	0	0	0	0	0	0

Previous day HENEX settlement and spreads (EUR/MW)

04.05.2021 - SPOT Settlement

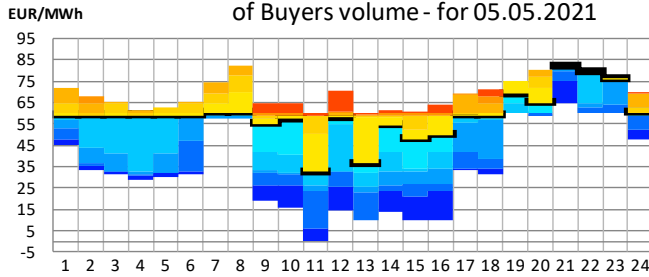


TUE 04.05.	BASE	PEAK	1	2	3	4	5	6	7	8	9	10	11	12	13	14	15	16	17	18	19	20	21	22	23	24
GR Price	64.0	60.3	71.9	61.7	64.9	60.4	60.0	60.0	60.0	59.1	55.0	57.3	59.1	59.1	59.1	52.4	52.3	53.9	59.1	68.0	65.3	83.1	87.4	80.6	75.9	70.5
GR-HUPX	15.3	7.6	26.0	25.2	40.2	40.8	38.0	20.1	1.7	-3.9	-8.1	0.6	7.3	9.1	7.7	5.0	11.3	11.2	10.6	11.0	7.0	18.3	18.0	22.8	22.9	25.0
GR-IBEX	16.3	13.0	21.1	10.9	21.3	16.8	16.4	16.4	15.4	14.5	7.4	9.7	14.5	14.5	14.5	8.2	8.2	9.6	14.5	16.9	13.9	24.3	28.5	29.2	24.8	19.6
GR-IT South	-12.5	-10.8	-18.1	-17.9	-14.8	-19.2	-19.9	-19.9	-30.2	-27.9	-33.3	-22.4	-13.4	-9.2	-3.6	0.0	-7.7	-10.7	-7.3	-4.4	-10.7	-6.9	-0.6	-0.4	0.0	-0.5
GR-PUN	-10.4	-11.4	-4.8	-8.6	-6.9	-14.1	-14.9	-14.8	-25.7	-27.9	-33.3	-22.4	-13.4	-9.2	-3.6	-6.9	-11.7	-11.5	-7.3	-4.4	-10.7	-2.2	2.6	1.4	0.6	-0.5

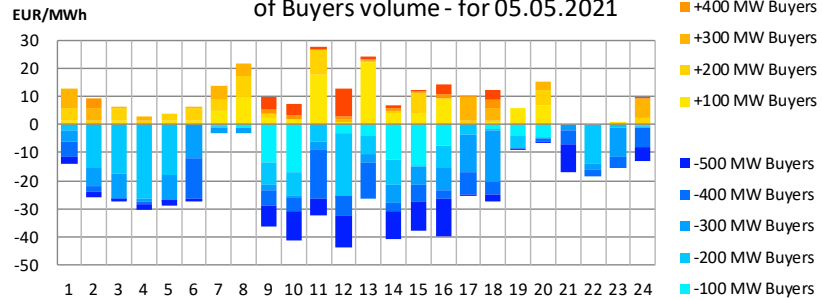
Forecasted HENEX sensitivity (D+1)

Potential change of HENEX price in case of

HENEX hourly price change In case of increase/decrease of Buyers volume - for 05.05.2021



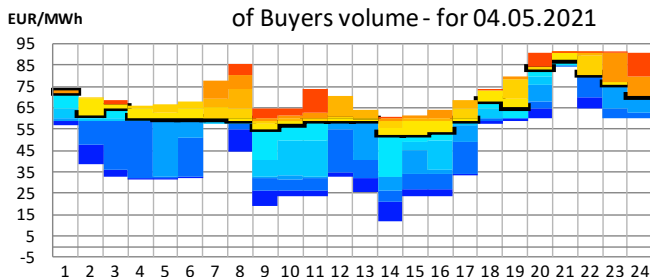
HENEX relative price change in case of increase/decrease of Buyers volume - for 05.05.2021



SELL	-500 MW	-400 MW	-300 MW	-200 MW	-100 MW	HENEX FORECAST	+100 MW	+200 MW	+300 MW	+400 MW	+500 MW
1	45.2	47.4	52.9	56.9	59.1	59.1	60.4	65.0	71.9	71.9	71.9
2	33.3	35.0	36.9	43.5	59.1	59.1	59.1	60.4	65.0	68.2	68.2
3	31.7	32.4	32.8	41.3	59.1	59.1	60.4	65.0	65.1	65.1	65.1
4	28.5	30.7	31.6	32.4	59.1	59.1	59.1	60.4	61.7	61.7	61.7
5	30.0	32.1	32.4	41.0	59.1	59.1	60.4	62.8	62.8	62.8	62.8
6	31.6	32.6	46.9	59.1	59.1	59.1	60.4	65.0	65.5	65.5	65.5
7	57.3	57.3	57.3	59.1	59.9	60.4	65.0	69.3	74.3	74.3	74.3
8	57.3	57.3	57.3	59.1	59.1	60.4	70.0	77.9	82.0	82.0	82.0
9	18.8	26.0	31.8	33.6	41.6	55.0	57.3	59.1	59.1	60.4	65.0
10	16.0	26.4	31.5	31.8	40.4	57.3	59.1	59.1	59.1	60.4	64.7
11	0.0	6.0	23.4	26.4	32.2	32.5	50.0	59.1	59.1	59.1	60.0
12	14.3	25.4	32.5	32.8	54.8	58.0	59.1	59.1	60.0	61.0	70.8
13	10.0	10.0	22.7	25.7	32.0	36.3	58.4	59.1	59.1	59.4	60.4
14	13.7	23.5	26.5	32.8	41.7	54.4	58.4	59.1	59.1	60.0	61.4
15	10.0	20.8	26.7	32.8	33.7	48.0	52.0	59.1	59.1	60.0	60.4
16	10.0	23.5	26.5	34.2	42.0	49.8	59.1	59.1	59.1	60.4	64.0
17	33.5	34.0	42.0	55.5	59.1	59.1	59.5	60.4	68.6	68.7	68.7
18	31.5	34.2	38.6	57.0	57.3	59.1	60.0	60.4	65.0	68.0	71.3
19	60.0	60.4	60.4	60.4	65.0	69.0	75.0	75.0	75.0	75.0	75.0
20	59.0	59.1	60.0	60.4	60.4	64.9	71.8	77.0	80.3	80.3	80.3
21	65.0	74.9	80.0	82.1	82.1	82.1	82.1	82.1	82.1	82.1	82.1
22	60.4	60.4	63.0	65.0	79.1	79.1	79.1	79.1	79.1	79.1	79.1
23	60.4	60.4	64.0	74.9	75.8	75.8	76.5	76.5	76.5	76.5	76.5
24	47.5	52.5	59.1	59.1	60.0	60.4	60.4	62.9	69.5	69.5	69.9

HENEX sensitivity for D

HENEX hourly price change In case of increase/decrease of Buyers volume - for 04.05.2021



HENEX relative price change in case of increase/decrease of Buyers volume - for 04.05.2021

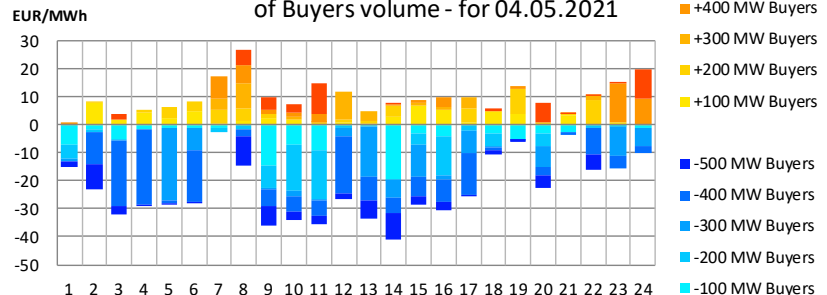
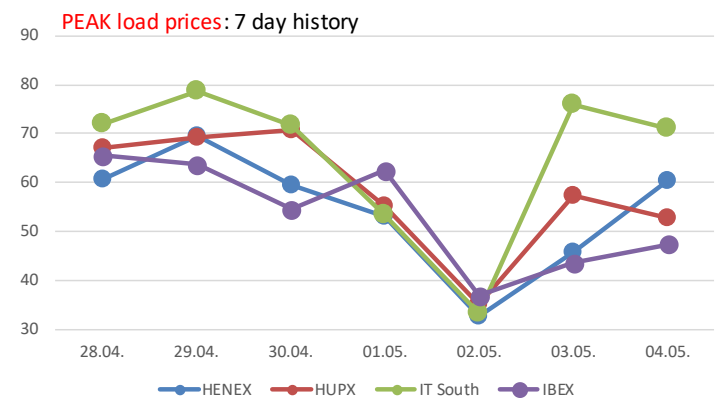
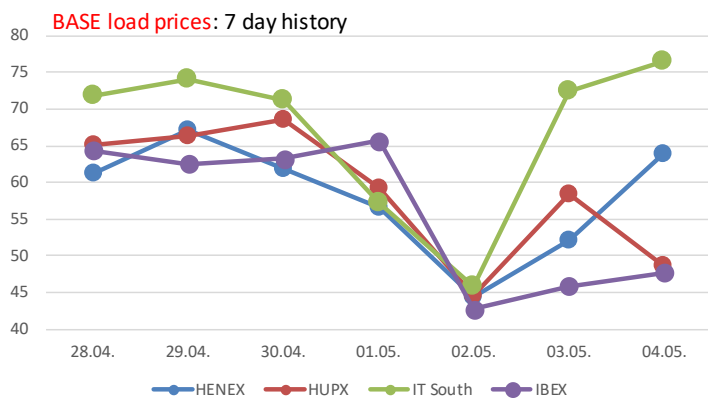


Table of HENEX sensitivity for D available in excel data file

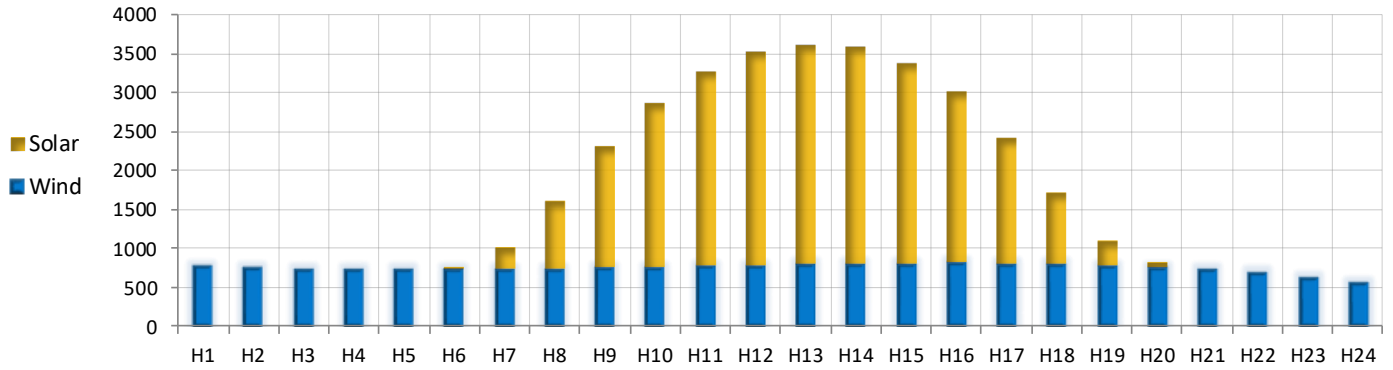
HENEX hourly spreads in last 7 days

TUE 04.05.	BASE	PEAK	1	2	3	4	5	6	7	8	9	10	11	12	13	14	15	16	17	18	19	20	21	22	23	24
GR Price	64.0	60.3	71.9	61.7	64.9	60.4	60.0	60.0	60.0	59.1	55.0	57.3	59.1	59.1	59.1	52.4	52.3	53.9	59.1	68.0	65.3	83.1	87.4	80.6	75.9	70.5
GR-HUPX	15.3	7.6	26.0	25.2	40.2	40.8	38.0	20.1	1.7	-3.9	-8.1	0.6	7.3	9.1	7.7	5.0	11.3	11.2	10.6	11.0	7.0	18.3	18.0	22.8	22.9	25.0
GR-IBEX	16.3	13.0	21.1	10.9	21.3	16.8	16.4	16.4	15.4	14.5	7.4	9.7	14.5	14.5	14.5	8.2	8.2	9.6	14.5	16.9	13.9	24.3	28.5	29.2	24.8	19.6
GR-IT South	-12.5	-10.8	-18.1	-17.9	-14.8	-19.2	-19.9	-19.9	-30.2	-27.9	-33.3	-22.4	-13.4	-9.2	-3.6	0.0	-7.7	-10.7	-7.3	-4.4	-10.7	-6.9	-0.6	-0.4	0.0	-0.5
GR-PUN	-10.4	-11.4	-4.8	-8.6	-6.9	-14.1	-14.9	-14.8	-25.7	-27.9	-33.3	-22.4	-13.4	-9.2	-3.6	-6.9	-11.7	-11.5	-7.3	-4.4	-10.7	-2.2	2.6	1.4	0.6	-0.5
MON 03.05.	BASE	PEAK	1	2	3	4	5	6	7	8	9	10	11	12	13	14	15	16	17	18	19	20	21	22	23	24
GR Price	52.0	45.8	58.5	54.6	52.7	52.5	55.8	58.7	58.6	30.5	0.0	30.4	39.5	42.0	37.9	37.5	42.0	52.1	59.0	60.3	74.0	75.0	75.3	70.9	70.8	60.3
GR-HUPX	-6.3	-11.4	5.5	5.1	4.0	3.9	7.1	5.0	-5.8	-42.9	-72.5	-36.5	-15.4	-10.1	-12.5	-10.5	-6.0	4.0	9.8	4.8	8.0	-0.1	-2.2	-1.0	4.0	3.5
GR-IBEX	6.2	2.2	7.6	3.8	1.9	1.7	5.0	15.1	15.0	-13.4	-44.0	-13.2	-4.1	-1.6	-5.7	0.9	3.2	8.5	14.9	15.3	28.7	23.9	24.1	25.6	25.5	9.5
GR-IT South	-20.4	-30.0	0.0	0.0	-1.6	0.0	0.0	-2.7	-16.1	-55.9	-87.9	-53.2	-39.5	-34.3	-31.8	-28.0	-28.0	-19.4	-12.8	-15.6	-2.5	-7.6	-14.8	-12.0	-17.6	-9.5
GR-PUN	-19.9	-30.0	0.0	0.0	-1.6	0.0	0.0	-2.7	-16.1	-55.9	-87.9	-53.2	-39.5	-34.3	-31.8	-28.0	-28.0	-19.4	-12.8	-15.6	-2.5	-7.6	-14.2	-9.5	-8.9	-9.3
SUN 02.05.	BASE	PEAK	1	2	3	4	5	6	7	8	9	10	11	12	13	14	15	16	17	18	19	20	21	22	23	24
GR Price	44.5	32.6	60.4	53.1	50.5	49.0	49.4	49.3	48.4	49.5	50.8	48.1	46.2	42.1	31.2	10.0	3.0	3.0	8.0	35.8	53.3	60.4	68.7	67.9	69.6	60.4
GR-HUPX	-0.1	-2.3	2.4	-1.1	-1.3	-1.3	0.1	0.9	2.1	3.0	4.0	2.5	1.8	-1.5	-8.1	-15.6	-5.8	-5.6	-6.2	0.6	4.6	2.0	2.8	4.3	9.0	4.3
GR-IBEX	1.8	-4.2	9.5	2.2	-0.4	-1.8	-1.4	5.7	4.8	5.3	6.4	3.7	1.9	-1.9	-12.4	-12.3	-9.3	-21.6	-21.6	-7.8	9.0	15.7	17.7	17.0	25.1	9.5
GR-IT South	-1.3	-0.5	-0.1	0.0	0.0	0.0	0.0	0.0	0.0	0.0	0.0	0.0	0.0	0.0	0.0	0.0	0.0	0.0	0.0	0.0	-1.0	-4.7	-6.3	-10.1	-5.0	-4.5
GR-PUN	-1.4	-0.5	-0.1	0.0	0.0	0.0	0.0	0.0	0.0	0.0	0.0	0.0	0.0	0.0	0.0	0.0	0.0	0.0	0.0	0.0	-1.0	-4.7	-6.3	-10.3	-5.4	-4.5
SAT 01.05.	BASE	PEAK	1	2	3	4	5	6	7	8	9	10	11	12	13	14	15	16	17	18	19	20	21	22	23	24
GR Price	56.7	53.1	64.3	60.3	59.9	59.9	59.9	58.0	52.5	54.0	54.0	56.2	57.5	56.7	53.1	51.1	48.2	45.5	49.0	50.5	54.4	61.0	68.7	65.1	60.3	59.5
GR-HUPX	-2.5	-2.0	-2.8	-4.1	-3.2	0.0	0.9	-0.3	-6.4	-6.5	-5.7	-4.8	1.1	0.3	-0.9	0.0	1.1	-0.1	0.8	-3.0	-6.0	-6.5	-4.4	-4.5	-5.0	-1.1
GR-IBEX	-9.1	-9.3	-15.6	-12.7	-8.8	-6.2	-4.7	-2.0	-10.7	-12.1	-5.9	-4.3	-11.6	-7.7	-8.6	-6.7	-4.6	-12.5	-10.9	-12.2	-13.4	-13.1	-10.0	-8.6	-9.0	-5.3
GR-IT South	-0.6	-0.3	-5.0	-4.3	-1.2	0.0	0.0	0.0	0.0	0.0	0.0	-3.4	0.0	0.0	0.0	0.0	0.0	0.0	0.0	0.0	0.0	0.0	0.0	0.0	0.0	0.0
GR-PUN	-1.0	-0.3	-5.0	-4.3	-1.1	0.0	0.0	0.0	0.0	0.0	0.0	-3.4	0.0	0.0	0.0	0.0	0.0	0.0	0.0	0.0	0.0	0.0	-4.0	-2.3	-2.8	0.0
FRI 30.04.	BASE	PEAK	1	2	3	4	5	6	7	8	9	10	11	12	13	14	15	16	17	18	19	20	21	22	23	24
GR Price	61.8	59.3	67.7	64.0	59.8	58.4	59.9	60.0	65.1	54.5	53.5	55.8	55.8	54.7	54.7	54.0	54.7	54.7	62.5	69.6	75.6	66.1	69.0	71.3	75.0	66.1
GR-HUPX	-6.9	-11.5	8.9	7.8	4.0	2.6	2.9	1.2	-5.4	-28.0	-34.6	-24.3	-17.6	-15.8	-10.5	-7.5	-5.2	-5.6	1.0	0.7	-0.5	-17.6	-16.0	-7.7	2.8	-0.4
GR-IBEX	-1.5	4.9	-18.3	-40.9	-40.3	-17.2	-15.7	9.1	10.3	-1.4	-2.3	1.8	3.5	2.5	2.8	2.7	3.5	2.8	8.1	13.7	19.7	-0.4	0.0	2.2	8.4	9.5
GR-IT South	-9.3	-12.2	-3.7	-3.6	-3.2	-2.4	-1.1	-5.4	-8.9	-27.6	-34.0	-31.3	-16.2	-12.1	-11.3	-7.2	-3.7	-12.4	-5.0	0.0	0.0	-13.0	-11.9	-7.4	-0.2	-2.8
GR-PUN	-13.1	-17.0	-6.2	-5.9	-4.5	-5.1	-3.8	-7.9	-11.3	-30.1	-36.3	-33.0	-23.3	-20.6	-17.6	-16.2	-13.1	-14.6	-6.7	-2.8	-2.9	-17.0	-16.1	-10.6	-3.6	-4.8
THU 29.04.	BASE	PEAK	1	2	3	4	5	6	7	8	9	10	11	12	13	14	15	16	17	18	19	20	21	22	23	24
GR Price	67.2	69.4	54.6	54.6	54.6	55.4	58.3	58.3	71.8	76.4	74.8	75.0	66.9	64.1	66.9	66.9	66.9	66.9	68.0	68.3	76.0	72.3	78.0	77.9	74.7	66.0
GR-HUPX	0.8	0.3	-3.5	-1.7	-0.6	0.6	3.5	1.3	3.0	-3.8	-8.9	-2.0	0.9	-1.5	1.4	0.3	1.8	0.2	2.6	4.3	8.8	-3.7	0.1	6.9	5.2	4.3
GR-IBEX	4.7	5.7	-8.8	2.2	2.9	-0.2	7.2	-0.7	2.7	0.3	-2.9	1.3	5.2	4.1	7.0	7.3	8.0	7.2	7.9	6.6	14.1	2.3	4.0	12.8	9.7	11.7
GR-IT South	-6.8	-9.2	-14.0	-9.2	-6.4	-3.9	-1.5	-5.0	0.0	-3.5	-10.3	-9.5	-11.6	-13.4	-8.2	-11.6	-11.9	-8.7	-11.0	-6.8	0.0	-7.7	-4.5	-0.2	0.0	-4.7
GR-PUN	-9.3	-11.2	-16.9	-11.7	-8.1	-5.7	-4.1	-7.0	-2.5	-6.2	-13.7	-12.0	-13.9	-15.5	-9.8	-11.6	-11.9	-9.6	-12.5	-9.2	-2.9	-11.6	-9.0	-4.5	-4.6	-7.7
WED 28.04.	BASE	PEAK	1	2	3	4	5	6	7	8	9	10	11	12	13	14	15	16	17	18	19	20	21	22	23	24
GR Price	61.3	60.8	55.8	54.6	54.6	54.6	54.6	58.5	66.9	71.3	73.5	66.6	58.4	54.9	55.7	54.6	54.6	54.6	54.6	60.0	69.1	72.6	74.6	70.8	66.9	58.4
GR-HUPX	-3.8	-6.3	0.3	0.3	0.4	1.4	-0.4	1.5	-7.3	-8.7	-8.5	-4.2	-6.7	-10.2	-9.7	-5.4	-1.8	-4.4	-7.6	-5.5	-4.2	-7.3	-4.8	0.8	0.1	-0.1
GR-IBEX	-3.1	-4.7	4.9	3.8	3.8	3.8	-4.0	4.5	-3.6	-15.2	-9.0	-3.3	-2.0	-4.7	-3.9	-3.4	-2.9	-3.5	-5.5	-0.3	-7.2	-10.4	0.1	-2.5	2.2	-15.6
GR-IT South	-10.5	-11.3	-14.6	-13.3	-12.8	-7.7	-10.3	-6.5	-8.1	-13.7	-12.1	-19.5	-21.3	-16.7	-12.3	-5.4	-6.6	-10.2	-13.4	-9.1	-3.9	-5.4	-4.8	-6.2	-5.9	-11.7
GR-PUN	-14.8	-16.9	-17.4	-16.1	-15.6	-10.0	-11.8	-9.5	-10.7	-16.1	-15.4	-21.8	-23.9	-23.5	-20.3	-16.6	-16.2	-17.5	-17.3	-12.4	-8.1	-9.8	-9.3	-10.8	-10.5	-15.3



Renewable generation forecast

Greek RES generation forecast

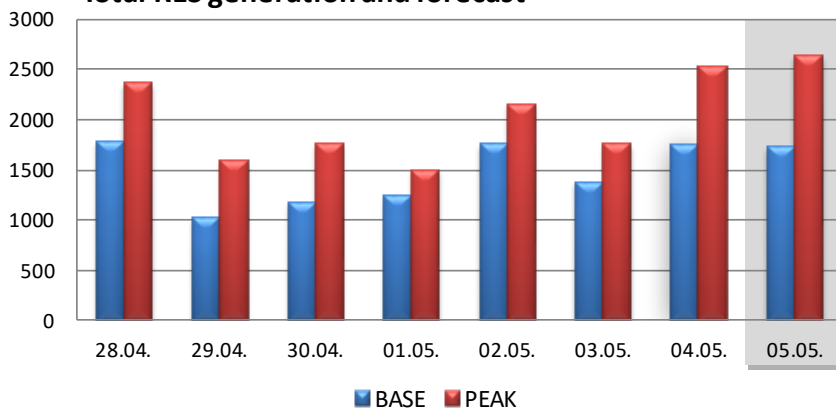


Wind		BASE	PEAK	1	2	3	4	5	6	7	8	9	10	11	12	13	14	15	16	17	18	19	20	21	22	23	24
WED	05.05. (D+1)	754	790	788	763	745	735	730	731	735	743	753	765	777	789	800	808	813	815	811	802	787	763	732	690	639	577
TUE	04.05.	1026	1160	760	768	784	809	841	878	918	962	1006	1050	1093	1132	1167	1196	1217	1230	1233	1225	1204	1168	1117	1048	961	855
MON	03.05.	735	545	1045	1025	992	1086	1074	1111	1208	1052	807	619	519	505	561	529	545	554	479	459	461	498	482	643	714	678
SUN	02.05.	1144	995	1573	1502	1504	1478	1538	1523	1416	1319	1238	1011	871	869	875	937	970	1107	1081	1041	1009	936	864	901	933	955
SAT	01.05.	678	440	804	690	632	580	621	615	466	358	346	388	349	297	283	301	291	277	318	556	756	1120	1418	1527	1628	1646
FRI	30.04.	487	456	241	300	384	401	379	350	307	271	193	183	229	241	277	342	448	602	637	663	769	888	945	895	867	877
THU	29.04.	382	372	750	642	524	398	303	230	147	92	81	85	103	111	137	208	305	487	732	806	780	624	565	475	329	253
WED	28.04.	1199	1249	1234	1150	1170	1047	1055	1031	1157	1239	1117	1169	1090	1136	1047	1024	1191	1307	1289	1396	1618	1600	1367	1240	1118	994

Solar		BASE	PEAK	1	2	3	4	5	6	7	8	9	10	11	12	13	14	15	16	17	18	19	20	21	22	23	24
WED	05.05. (D+1)	972	1847	0	0	0	0	0	26	272	859	1562	2108	2499	2733	2811	2783	2561	2194	1616	919	311	64	0	0	0	0
TUE	04.05.	717	1364	0	0	0	0	0	12	157	672	1222	1650	1956	2139	2211	2012	1825	1548	1103	581	111	4	0	0	0	0
MON	03.05.	640	1217	0	0	0	0	0	7	168	595	1104	1541	1838	2004	2028	1907	1636	1245	803	390	102	0	0	0	0	0
SUN	02.05.	612	1163	0	0	0	0	0	6	162	561	1017	1407	1684	1855	1847	1764	1577	1289	911	480	127	0	0	0	0	0
SAT	01.05.	554	1060	0	0	0	0	0	6	138	445	815	1155	1427	1627	1780	1722	1538	1238	851	442	118	3	0	0	0	0
FRI	30.04.	685	1307	0	0	0	0	0	5	162	592	1115	1579	1901	2091	2128	2031	1794	1435	980	498	128	0	0	0	0	0
THU	29.04.	640	1218	0	0	0	0	0	5	158	580	1096	1544	1838	1986	2017	1890	1619	1249	838	430	113	0	0	0	0	0
WED	28.04.	585	1115	0	0	0	0	0	4	140	504	955	1356	1625	1765	1823	1737	1533	1223	833	424	111	0	0	0	0	0

RES total		BASE	PEAK	1	2	3	4	5	6	7	8	9	10	11	12	13	14	15	16	17	18	19	20	21	22	23	24
WED	05.05. (D+1)	1725	2637	788	763	745	735	730	757	1007	1602	2315	2873	3276	3522	3611	3591	3375	3009	2428	1721	1098	827	732	690	639	577
TUE	04.05.	1743	2524	760	768	784	809	841	890	1076	1634	2228	2700	3048	3271	3378	3208	3042	2778	2336	1806	1315	1172	1117	1048	961	855
MON	03.05.	1756	2159	1573	1502	1504	1478	1538	1529	1578	1880	2255	2418	2555	2724	2722	2701	2547	2396	1992	1521	1136	936	864	901	933	955
SUN	02.05.	1232	1500	804	690	632	580	621	621	604	803	1161	1543	1776	1924	2063	2023	1829	1515	1169	998	874	1123	1418	1527	1628	1646
SAT	01.05.	1172	1763	241	300	384	401	379	355	469	863	1308	1762	2130	2332	2405	2373	2242	2037	1617	1161	897	888	945	895	867	877
FRI	30.04.	1022	1590	750	642	524	398	303	235	305	672	1177	1629	1941	2097	2154	2098	1924	1736	1570	1236	893	624	565	475	329	253
THU	29.04.	1784	2364	1234	1150	1170	1047	1055	1035	1297	1743	2072	2525	2715	2901	2870	2761	2724	2530	2122	1820	1729	1600	1367	1240	1118	994
WED	28.04.	1784	2364	1234	1150	1170	1047	1055	1035	1297	1743	2072	2525	2715	2901	2870	2761	2724	2530	2122	1820	1729	1600	1367	1240	1118	994

Total RES generation and forecast

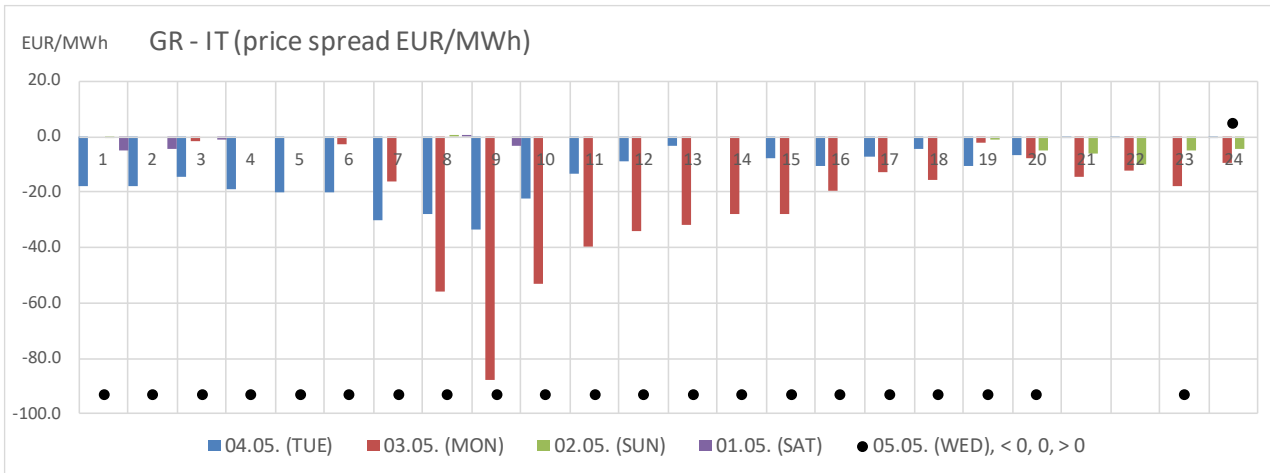


Base	Wind	Solar	Total
28.04.	1,249	1,115	2,364
29.04.	372	1,218	1,590
30.04.	456	1,307	1,763
01.05.	440	1,060	1,500
02.05.	995	1,163	2,159
03.05.	545	1,217	1,761
04.05.	1,160	1,364	2,524
05.05.	790	1,847	2,637

GR-IT South price spread forecast and history

GR - IT South	BASE	PEAK	1	2	3	4	5	6	7	8	9	10	11	12	13	14	15	16	17	18	19	20	21	22	23	24	
WED 05.05.			<0	<0	<0	<0	<0	<0	<0	<0	<0	<0	<0	<0	<0	<0	<0	<0	<0	<0	<0	0	0	<0	<0		
TUE 04.05.	-12.5	-10.0	-18.1	-17.9	-14.8	-19.2	-19.9	-19.9	-30.2	-27.9	-33.3	-22.4	-13.4	-9.2	-3.6	0.0	-7.7	-10.7	-7.3	-4.4	-10.7	-6.9	-0.6	-0.4	0.0	-0.5	
MON 03.05.	-20.4	-28.9	0.0	0.0	-1.6	0.0	0.0	-2.7	-16.1	-55.9	-87.9	-53.2	-39.5	-34.3	-31.8	-28.0	-28.0	-19.4	-12.8	-15.6	-2.5	-7.6	-14.8	-12.0	-17.6	-9.5	
SUN 02.05.	-1.3	-0.9	-0.1	0.0	0.0	0.0	0.0	0.0	0.0	0.0	0.0	0.0	0.0	0.0	0.0	0.0	0.0	0.0	0.0	0.0	0.0	-1.0	-4.7	-6.3	-10.1	-5.0	-4.5
SAT 01.05.	-0.6	-0.3	-5.0	-4.3	-1.2	0.0	0.0	0.0	0.0	0.0	0.0	0.0	0.0	0.0	0.0	0.0	0.0	0.0	0.0	0.0	0.0	0.0	0.0	0.0	0.0	0.0	0.0
FRI 30.04.	-9.3	-12.2	-3.7	-3.6	-3.2	-2.4	-1.1	-5.4	-8.9	-27.6	-34.0	-31.3	-16.2	-12.1	-11.3	-7.2	-3.7	-12.4	-5.0	0.0	0.0	-13.0	-11.9	-7.4	-0.2	-2.8	
THU 29.04.	-6.8	-8.9	-14.0	-9.2	-6.4	-3.9	-1.5	-5.0	0.0	-3.5	-10.3	-9.5	-11.6	-13.4	-8.2	-11.6	-11.9	-8.7	-11.0	-6.8	0.0	-7.7	-4.5	-0.2	0.0	-4.7	
WED 28.04.	-10.5	-10.8	-14.6	-13.3	-12.8	-7.7	-10.3	-6.5	-8.1	-13.7	-12.1	-19.5	-21.3	-16.7	-12.3	-5.4	-6.6	-10.2	-13.4	-9.1	-3.9	-5.4	-4.8	-6.2	-5.9	-11.7	

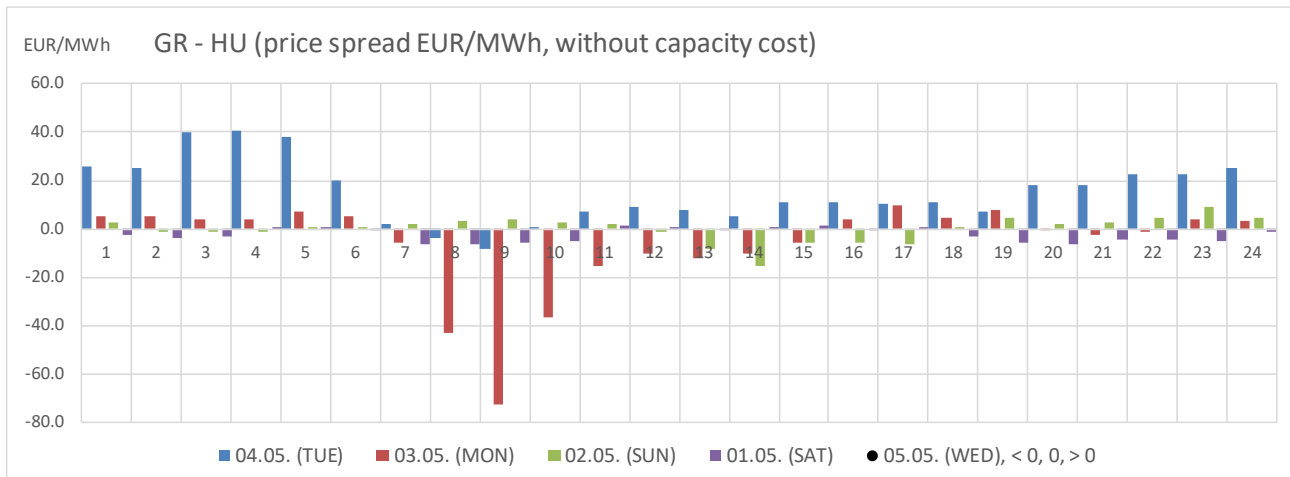
- Greek market is decoupled from Italy and above Italy (red color, >0)
- Greek market is decoupled from Italy and below Italy (green color, <0)



GR-HU price spread forecast and history

GR - HUPX	BASE	PEAK	1	2	3	4	5	6	7	8	9	10	11	12	13	14	15	16	17	18	19	20	21	22	23	24
WED 05.05.			5	0	0	0	0	5	5	0	0	0	0	0	0	0	0	0	0	0	5	0	5	5	5	5
TUE 04.05.	15.3	8.4	26.0	25.2	40.2	40.8	38.0	20.1	1.7	-3.9	-8.1	0.6	7.3	9.1	7.7	5.0	11.3	11.2	10.6	11.0	7.0	18.3	18.0	22.8	22.9	25.0
MON 03.05.	-6.3	-10.7	5.5	5.1	4.0	3.9	7.1	5.0	-5.8	-42.9	-72.5	-36.5	-15.4	-10.1	-12.5	-10.5	-6.0	4.0	9.8	4.8	8.0	-0.1	-2.2	-1.0	4.0	3.5
SUN 02.05.	-0.1	-1.9	2.4	-1.1	-1.3	-1.3	0.1	0.9	2.1	3.0	4.0	2.5	1.8	-1.5	-8.1	-15.6	-5.8	-5.6	-6.2	0.6	4.6	2.0	2.8	4.3	9.0	4.3
SAT 01.05.	-2.5	-2.2	-2.8	-4.1	-3.2	0.0	0.9	-0.3	-6.4	-6.5	-5.7	-4.8	1.1	0.3	-0.9	0.0	1.1	-0.1	0.8	-3.0	-6.0	-6.5	-4.4	-4.5	-5.0	-1.1
FRI 30.04.	-6.9	-11.8	8.9	7.8	4.0	2.6	2.9	1.2	-5.4	-28.0	-34.6	-24.3	-17.6	-15.8	-10.5	-7.5	-5.2	-5.6	1.0	0.7	-0.5	-17.6	-16.0	-7.7	2.8	-0.4
THU 29.04.	0.8	0.3	-3.5	-1.7	-0.6	0.6	3.5	1.3	3.0	-3.8	-8.9	-2.0	0.9	-1.5	1.4	0.3	1.8	0.2	2.6	4.3	8.8	-3.7	0.1	6.9	5.2	4.3
WED 28.04.	-3.8	-6.2	0.3	0.3	0.4	1.4	-0.4	1.5	-7.3	-8.7	-8.5	-4.2	-6.7	-10.2	-9.7	-5.4	-1.8	-4.4	-7.6	-5.5	-4.2	-7.3	-4.8	0.8	0.1	-0.1

- D+1 : forecasted HENEX hourly price - Forecasted HUPX hourly price
- Greek market is above HUPX (red color, >0)
- Greek market is below HUPX (green color, <0)



GR-HU cross border arbitration opportunities

GR - HUPX	BASE	PEAK	1	2	3	4	5	6	7	8	9	10	11	12	13	14	15	16	17	18	19	20	21	22	23	24		
WED 05.05.	Opportunity:																											
TUE 04.05.	16.3	8.9	27.3	26.5	41.4	42.0	38.9	21.0	2.1	-3.6	-7.8	1.0	7.6	9.4	8.1	5.4	11.6	11.5	11.0	11.5	7.5	19.1	19.5	24.4	26.5	28.6		
MON 03.05.	-6.3	-10.7	5.5	5.1	4.0	4.0	7.2	5.0	-5.8	-42.9	-72.5	-36.5	-15.4	-10.1	-12.5	-10.5	-6.0	4.0	9.8	4.8	8.0	-0.1	-2.2	-1.0	4.0	3.5		
SUN 02.05.	0.0	-1.8	2.5	-0.9	-1.1	-1.1	0.3	1.0	2.2	3.0	4.0	2.6	1.8	-1.5	-8.1	-15.5	-5.8	-5.6	-6.1	0.6	4.6	2.0	2.9	4.3	9.1	4.4		
SAT 01.05.	-2.3	-2.0	-2.1	-3.5	-2.6	0.7	1.5	0.0	-6.3	-6.4	-5.6	-4.7	1.2	0.5	-0.8	0.1	1.2	0.0	1.0	-2.8	-5.8	-6.4	-4.3	-4.4	-4.7	-0.9		
FRI 30.04.	-6.4	-11.6	9.8	8.6	4.9	3.5	3.8	2.0	-4.9	-27.9	-34.4	-24.1	-17.4	-15.5	-10.3	-7.3	-5.0	-5.5	1.4	1.0	-0.2	-17.4	-15.7	-7.3	3.6	0.0		
THU 29.04.	1.8	0.8	-1.6	0.2	1.4	2.6	5.5	3.3	3.6	-3.4	-8.5	-1.5	1.5	-0.9	2.0	0.7	2.2	0.7	2.9	4.8	9.3	-3.2	0.6	7.8	6.8	5.9		
WED 28.04.	-3.1	-5.6	1.0	1.1	1.2	2.2	0.4	2.3	-6.6	-8.0	-7.8	-3.5	-5.9	-9.5	-9.0	-4.6	-1.4	-3.9	-7.2	-5.0	-3.8	-6.8	-4.1	1.5	0.8	2.7		

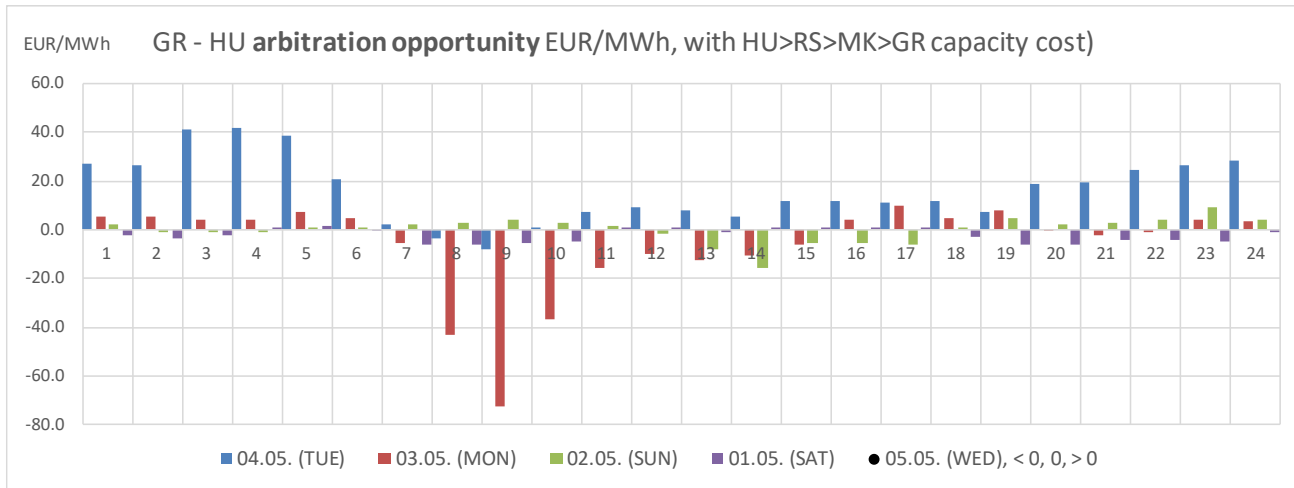
■ Green: High arbitration opportunity **forecast:** Deliver from HUPX to HENEX

■ Red: High arbitration opportunity **forecast:** Deliver HENEX to HUPX

History: Physical delivery from HUPX to HENEX with price of daily auctions HU>RS + RS>MK + MK>GR included

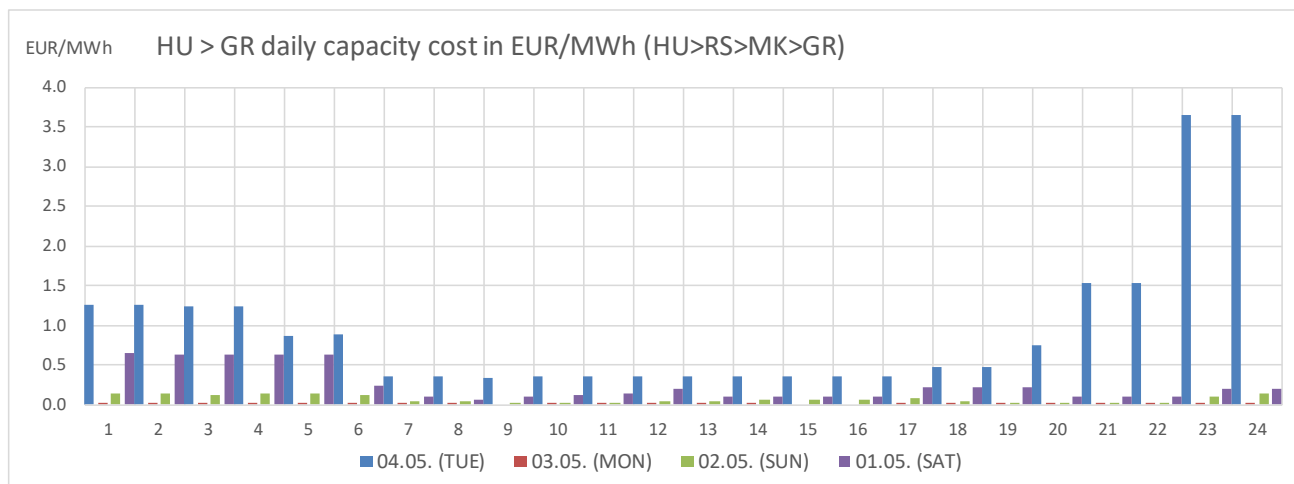
- Greek market is above HUPX (red color, >0)

- Greek market is below HUPX (green color, <0)

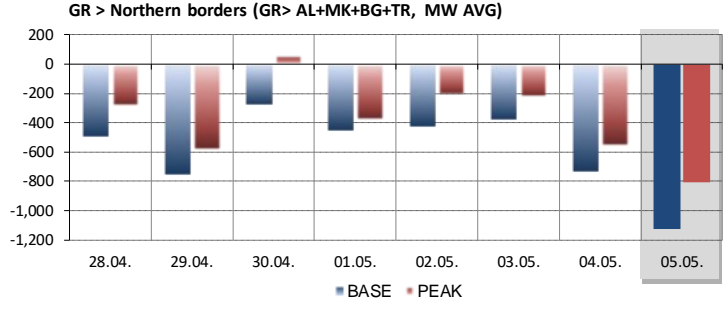
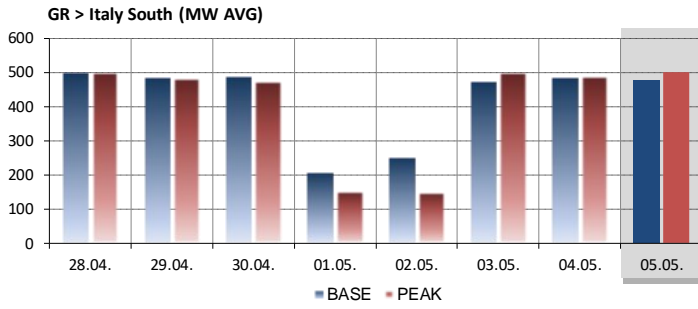


Daily capacity rent price (HU>RS>MK>GR)

HUPX > GR	BASE	PEAK	1	2	3	4	5	6	7	8	9	10	11	12	13	14	15	16	17	18	19	20	21	22	23	24
04.05.	0.9	0.5	1.3	1.3	1.2	1.2	0.9	0.9	0.4	0.4	0.3	0.4	0.4	0.4	0.4	0.4	0.4	0.4	0.4	0.5	0.5	0.8	1.5	1.5	3.7	3.7
03.05.	0.0	0.0	0.0	0.0	0.0	0.0	0.0	0.0	0.0	0.0	0.0	0.0	0.0	0.0	0.0	0.0	0.0	0.0	0.0	0.0	0.0	0.0	0.0	0.0	0.0	0.0
02.05.	0.1	0.0	0.1	0.1	0.1	0.1	0.1	0.1	0.1	0.0	0.0	0.0	0.0	0.0	0.1	0.1	0.1	0.1	0.1	0.1	0.0	0.0	0.0	0.1	0.1	
01.05.	0.3	0.1	0.7	0.6	0.6	0.6	0.6	0.2	0.1	0.1	0.1	0.1	0.1	0.2	0.1	0.1	0.1	0.1	0.2	0.2	0.2	0.1	0.1	0.1	0.2	0.2
30.04.	0.4	0.2	0.9	0.9	0.9	0.9	0.9	0.8	0.4	0.1	0.2	0.2	0.2	0.3	0.2	0.2	0.2	0.2	0.3	0.3	0.3	0.2	0.3	0.5	0.8	0.5
29.04.	1.0	0.5	2.0	1.9	1.9	2.0	2.0	2.0	0.7	0.4	0.4	0.5	0.7	0.7	0.6	0.5	0.5	0.5	0.4	0.5	0.4	0.5	0.5	0.9	1.6	1.6
28.04.	0.8	0.6	0.8	0.8	0.8	0.8	0.8	0.8	0.7	0.7	0.7	0.7	0.8	0.7	0.7	0.7	0.5	0.5	0.5	0.5	0.4	0.5	0.7	0.7	0.8	2.8



Commercial flows forecast and history



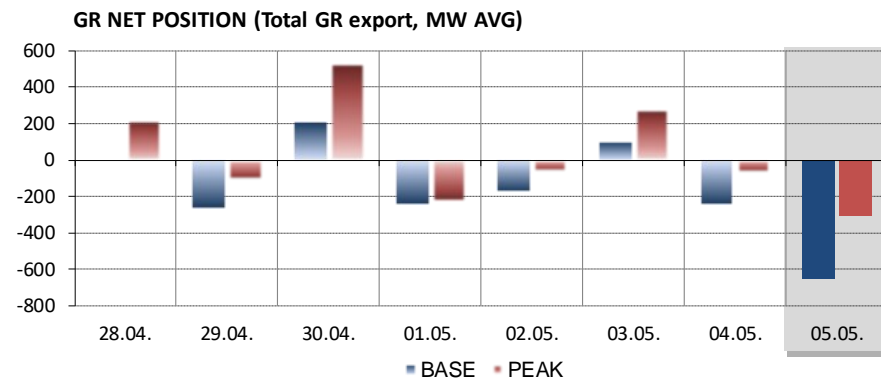
HENEX > IT South		BASE	PEAK	1	2	3	4	5	6	7	8	9	10	11	12	13	14	15	16	17	18	19	20	21	22	23	24
WED	05.05.																										
TUE	04.05.	485	489	500	500	500	500	500	500	500	500	500	500	500	500	500	500	500	500	500	500	500	500	500	500	500	500
MON	03.05.	474	500	130	342	500	425	489	500	500	500	500	500	500	500	500	500	500	500	500	500	500	500	500	500	500	500
SUN	02.05.	251	176	500	236	199	218	316	275	160	323	332	198	86	-293	-155	-217	257	264	-29	350	500	500	500	500	500	500
SAT	01.05.	207	150	500	500	500	446	413	399	-15	278	500	328	493	-31	-110	179	374	146	-86	30	-235	228	131	-15	-176	184
FRI	30.04.	487	476	500	500	500	500	500	500	500	500	500	500	500	500	500	500	500	500	500	500	500	500	500	500	500	500
THU	29.04.	486	485	500	500	500	500	500	500	450	500	500	500	500	500	500	500	500	500	500	500	302	500	500	500	415	500
WED	28.04.	500	500	500	500	500	500	500	500	500	500	500	500	500	500	500	500	500	500	500	500	500	500	500	500	500	500

HENEX > North		BASE	PEAK	1	2	3	4	5	6	7	8	9	10	11	12	13	14	15	16	17	18	19	20	21	22	23	24
WED	05.05.*																										
TUE	04.05.	-732	-588	-986	-980	-984	-984	-994	-926	-627	-359	-333	-290	-359	-469	-400	-344	-501	-632	-639	-800	-837	-1045	-995	-1045	-992	-1044
MON	03.05.	-374	-236	-487	-553	-531	-496	-648	-639	-543	-44	186	15	-68	-67	-126	-40	-72	-354	-588	-568	-618	-382	-385	-588	-704	-687
SUN	02.05.	-423	-228	-674	-599	-618	-603	-729	-733	-633	-588	-555	-548	-435	-274	-120	509	172	90	97	-370	-664	-400	-460	-508	-789	-730
SAT	01.05.	-454	-380	-517	-569	-545	-675	-710	-810	-506	-220	-260	-288	-444	-361	-365	-224	-354	-369	-543	-517	-503	-322	-396	-331	-413	-647
FRI	30.04.	-275	44	-1000	-1026	-880	-819	-742	-713	-432	-257	-191	0	116	125	201	221	277	225	43	-15	-249	-81	-97	-343	-513	-451
THU	29.04.	-750	-604	-717	-947	-1011	-1117	-1142	-1082	-897	-350	-297	-557	-529	-582	-574	-366	-390	-411	-661	-940	-998	-727	-820	-1012	-991	-883
WED	28.04.	-491	-300	-740	-794	-871	-811	-889	-781	-716	-170	-83	-454	-387	-383	-246	-144	-103	-71	-342	-445	-515	-260	-466	-594	-728	-788

*: Forecast of commercial flows on GR>AL, GR>MK, GR>BG and GR>TR borders

- Green: Greece exporting from Italy / North borders
- Red: Greece importing to Italy / North borders

GR NET Position		BASE	PEAK	1	2	3	4	5	6	7	8	9	10	11	12	13	14	15	16	17	18	19	20	21	22	23	24
WED	05.05.																										
TUE	04.05.	-247	-99	-486	-480	-484	-484	-494	-426	-127	141	167	210	141	31	100	8	-1	-132	-139	-300	-337	-545	-495	-545	-707	-544
MON	03.05.	100	264	-357	-211	-31	-71	-159	-139	-43	456	686	515	432	433	374	460	428	146	-88	-68	-118	118	115	-88	-204	-187
SUN	02.05.	-173	-51	-174	-363	-419	-385	-413	-458	-473	-265	-223	-350	-349	-567	-275	292	429	354	68	-20	-164	100	40	-8	-289	-230
SAT	01.05.	-247	-231	-17	-69	-45	-229	-297	-411	-521	58	240	40	49	-392	-475	-45	20	-223	-629	-487	-738	-94	-265	-346	-589	-463
FRI	30.04.	212	520	-500	-526	-380	-319	-242	-213	68	243	309	500	616	625	701	721	777	725	543	325	101	419	403	157	-13	49
THU	29.04.	-264	-119	-217	-447	-511	-617	-642	-582	-447	150	203	-57	-29	-82	-74	134	110	89	-161	-440	-696	-227	-320	-512	-576	-383
WED	28.04.	9	200	-240	-294	-371	-311	-389	-281	-216	330	417	46	113	117	254	356	397	429	158	55	-15	240	34	-94	-228	-288



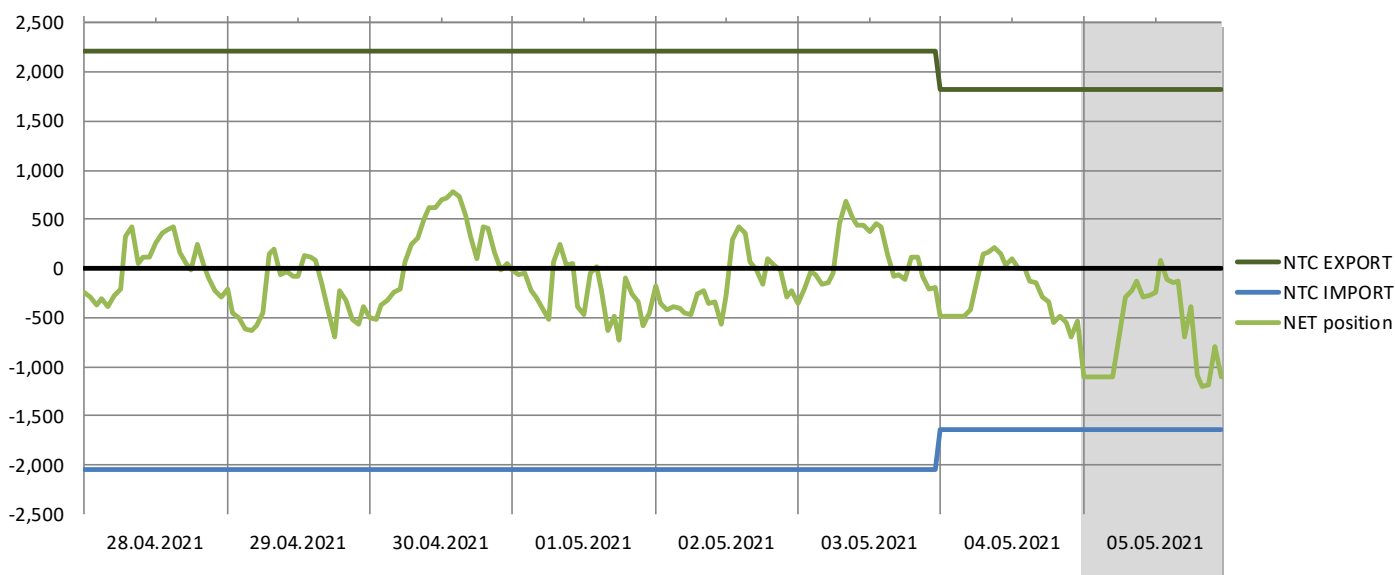
Net transfer capacities

D+1 05.05.	1	2	3	4	5	6	7	8	9	10	11	12	13	14	15	16	17	18	19	20	21	22	23	24
GR > IT	500	500	500	500	500	500	500	500	500	500	500	500	500	500	500	500	500	500	500	500	500	500	500	500
GR > AL	0	0	0	0	0	0	0	0	0	0	0	0	0	0	0	0	0	0	0	0	0	0	0	0
GR > MK	500	500	500	500	500	500	500	500	500	500	500	500	500	500	500	500	500	500	500	500	500	500	500	500
GR > BG	600	600	600	600	600	600	600	600	600	600	600	600	600	600	600	600	600	600	600	600	600	600	600	600
GR > TR	216	216	216	216	216	216	216	216	216	216	216	216	216	216	216	216	216	216	216	216	216	216	216	216
Total	1816	1816	1816	1816	1816	1816	1816	1816	1816	1816	1816	1816	1816	1816	1816	1816	1816	1816	1816	1816	1816	1816	1816	1816
IT > GR	500	500	500	500	500	500	500	500	500	500	500	500	500	500	500	500	500	500	500	500	500	500	500	500
AL > GR	0	0	0	0	0	0	0	0	0	0	0	0	0	0	0	0	0	0	0	0	0	0	0	0
MK > GR	400	400	400	400	400	400	400	400	400	400	400	400	400	400	400	400	400	400	400	400	400	400	400	400
BG > GR	700	700	700	700	700	700	700	700	700	700	700	700	700	700	700	700	700	700	700	700	700	700	700	700
TR > GR	50	50	50	50	50	50	50	50	50	50	50	50	50	50	50	50	50	50	50	50	50	50	50	50
Total	1650	1650	1650	1650	1650	1650	1650	1650	1650	1650	1650	1650	1650	1650	1650	1650	1650	1650	1650	1650	1650	1650	1650	1650

NTC change compared to previous day (MW)

NTC Change	1	2	3	4	5	6	7	8	9	10	11	12	13	14	15	16	17	18	19	20	21	22	23	24
GR > IT	0	0	0	0	0	0	0	0	0	0	0	0	0	0	0	0	0	0	0	0	0	0	0	0
GR > AL	0	0	0	0	0	0	0	0	0	0	0	0	0	0	0	0	0	0	0	0	0	0	0	0
GR > MK	0	0	0	0	0	0	0	0	0	0	0	0	0	0	0	0	0	0	0	0	0	0	0	0
GR > BG	0	0	0	0	0	0	0	0	0	0	0	0	0	0	0	0	0	0	0	0	0	0	0	0
GR > TR	0	0	0	0	0	0	0	0	0	0	0	0	0	0	0	0	0	0	0	0	0	0	0	0
Total	0	0	0	0	0	0	0	0	0	0	0	0	0	0	0	0	0	0	0	0	0	0	0	0
IT > GR	0	0	0	0	0	0	0	0	0	0	0	0	0	0	0	0	0	0	0	0	0	0	0	0
AL > GR	0	0	0	0	0	0	0	0	0	0	0	0	0	0	0	0	0	0	0	0	0	0	0	0
MK > GR	0	0	0	0	0	0	0	0	0	0	0	0	0	0	0	0	0	0	0	0	0	0	0	0
BG > GR	0	0	0	0	0	0	0	0	0	0	0	0	0	0	0	0	0	0	0	0	0	0	0	0
TR > GR	0	0	0	0	0	0	0	0	0	0	0	0	0	0	0	0	0	0	0	0	0	0	0	0
Total	0	0	0	0	0	0	0	0	0	0	0	0	0	0	0	0	0	0	0	0	0	0	0	0

GR NTCs and Net position (history and forecast, MW)



Upcoming transmission grid maintenances affecting Greek import and export NTCs

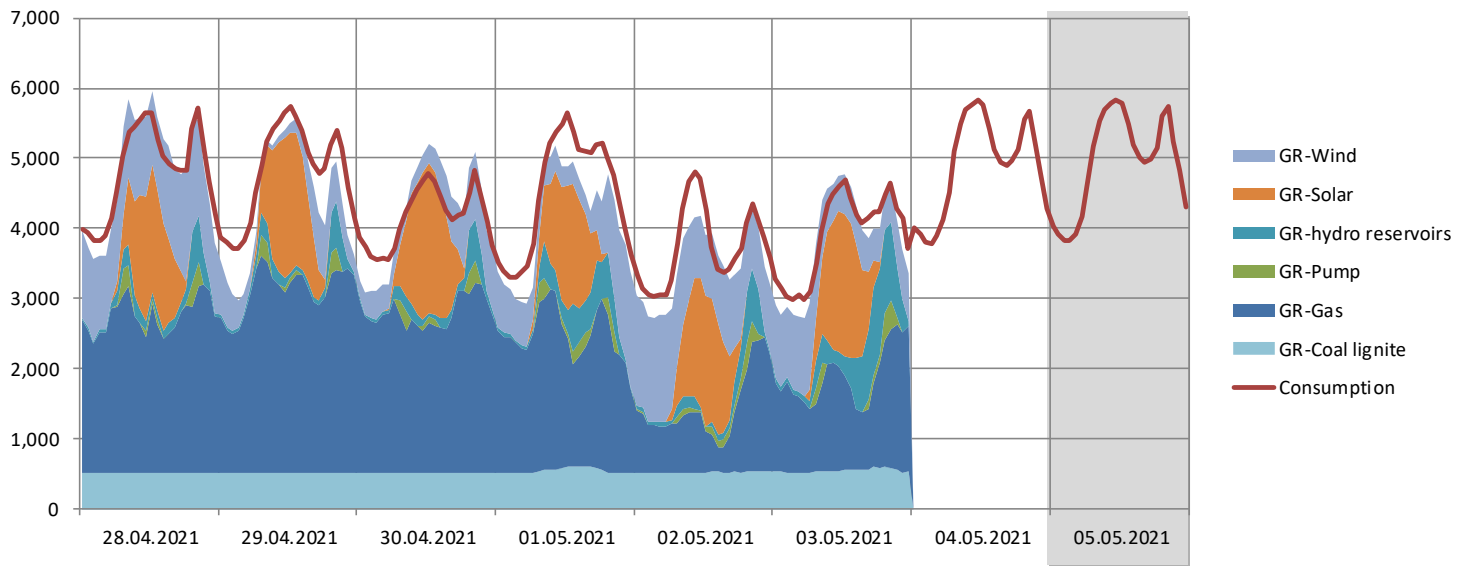
GR- AL: 03.05. - 04.05. (Kardia—Zemblak), NTC 0 MW

GR - BG: 17.05.—21.05. (Thessaloniki—Blagoevgrad), NTC 0 MW (MK-GR NTC also affected)

GR - IT: 24.05.—20.06. (Galatina—Arachthos), NTC 0 MW

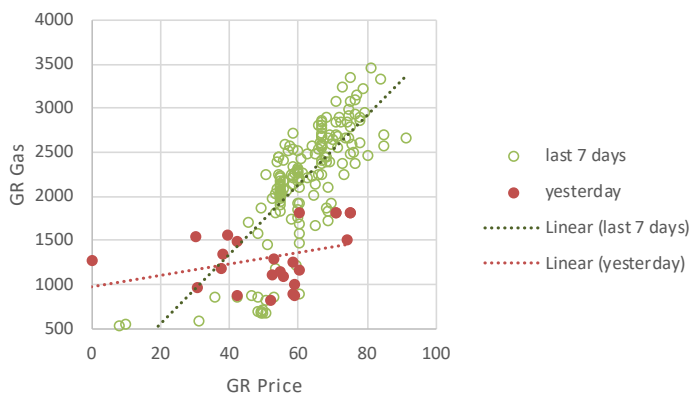
Power generation, consumption, temperatures

Greece - Power generation and power consumption (MWh)

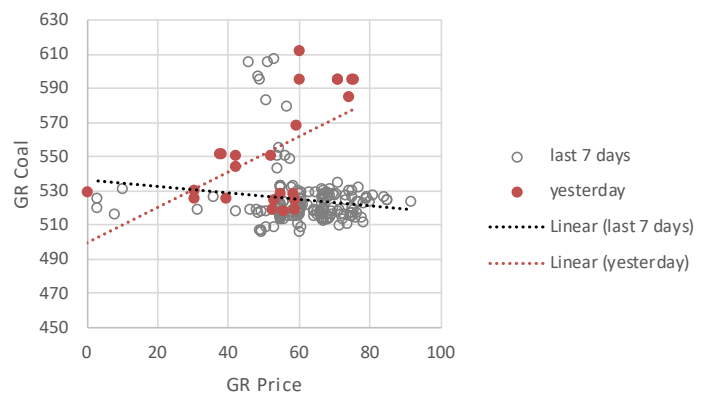


Generation price curves

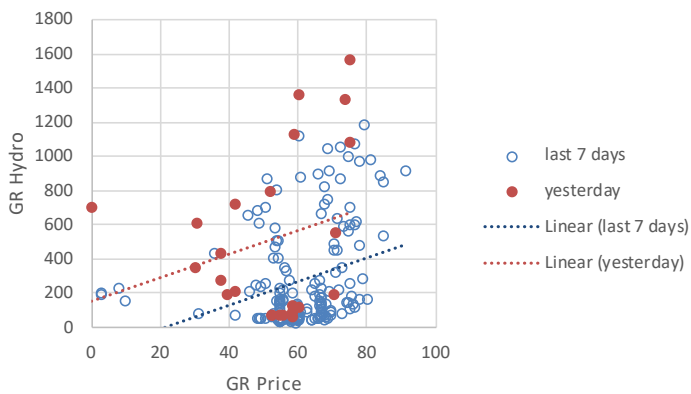
GR GAS generation



GR COAL generation



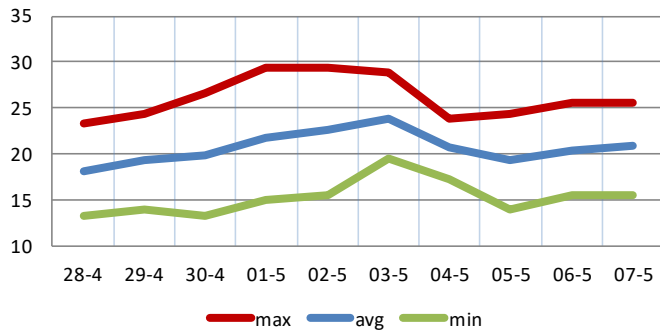
GR HYDRO generation



Temperature forecast

Weighted average temperature

GR - Athens

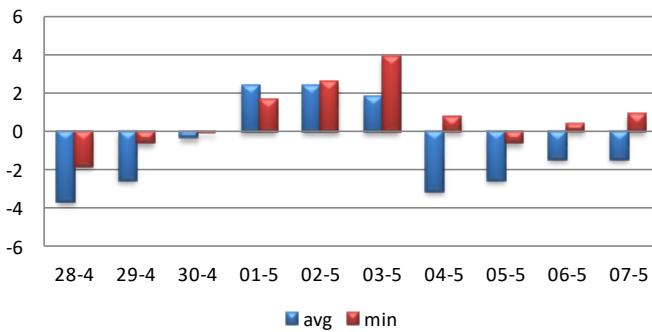


	Greece					
	MAX	AVG	MIN	LT max	LT avg	LT min
28-4	23.3	18.2	13.3	27	20	17
29-4	24.4	19.4	13.9	27	20	17
30-4	26.7	19.9	13.3	27	20	17
01-5	29.4	21.7	15.0	27	20	17
02-5	29.4	22.6	15.6	27	20	17
03-5	28.9	23.9	19.4	27	20	17
04-5	23.9	20.8	17.2	27	20	17
05-5	24.4	19.4	13.9	27	20	17
06-5	25.6	20.4	15.6	27	20	17
07-5	25.6	20.9	15.6	27	20	17

Temperature deviation forecast

Deviation against long term monthly average

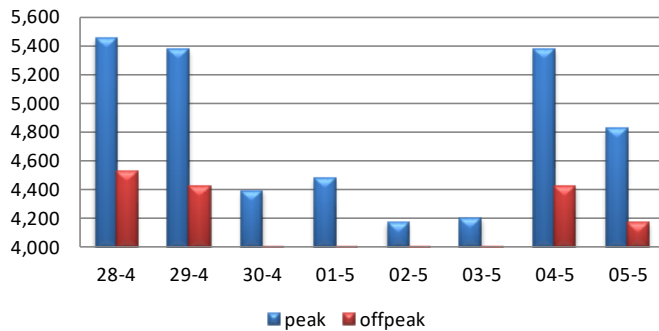
GR - Athens



	Greece temp. dev.	
	MAX	AVG
28-4	-3.7	-1.8
29-4	-2.6	-0.6
30-4	-0.3	-0.1
01-5	2.4	1.7
02-5	2.4	2.6
03-5	1.9	3.9
04-5	-3.1	0.8
05-5	-2.6	-0.6
06-5	-1.4	0.4
07-5	-1.4	0.9

Consumption forecast, MW average

Greece

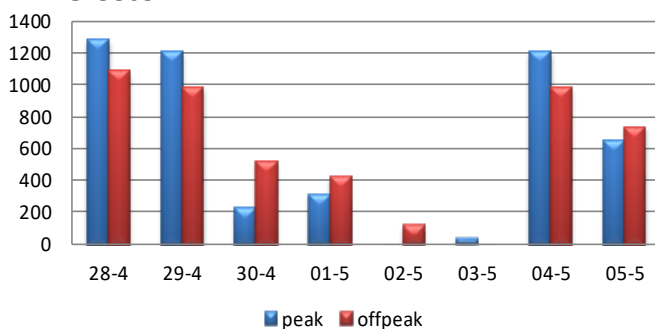


MW	Greece	
	Peak	Offpeak
28-4	5,450	4,514
29-4	5,379	4,420
30-4	4,390	3,952
01-5	4,477	3,852
02-5	4,168	3,549
03-5	4,202	3,431
04-5	5,379	4,420
05-5	4,815	4,167

Consumption forecast change

Consumption changes compared to the day with minimal consumption in last 7 day, MW average

Greece



MW	Greece	
	Peak	Offpeak
28-4	1,282	1,083
29-4	1,211	989
30-4	222	521
01-5	309	421
02-5	0	118
03-5	34	0
04-5	1,211	989
05-5	647	736